

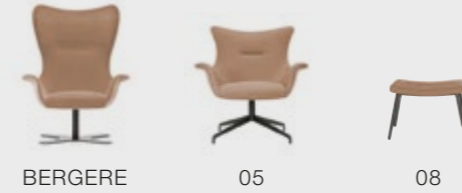
# MODERN COLLECTION



STUHLKONTOR BERLIN®

Nirvana, Adima, Magda, Margot,  
 Megan, Kesy, Bliss, Da Vinci,  
 Queen, Manu, Papas, Caffè, Spoon,  
 Isabel, Fast, Vesper, Conference,  
 Lap, Ren, Med, Portopiccolo,  
 America, Jewel, Lina, Arty, Mou,  
 Molecule, Bloom, One, Penta, Pongo

**Nirvana**, design Paolo Martinig



032

**Adima**, design CarlesiTonelli



048

**Magda**, design CarlesiTonelli



064



**Margot**, design CarlesiTonelli



084

**Megan**, design CarlesiTonelli



098

**Kesy**, design CarlesiTonelli



110



**Bliss**, design CarlesiTonelli

124



**Caffè**, design Tom Kelley

184



**Da Vinci**, design Konzept Stockholm™

134



**Spoon**, design CarlesiTonelli

192



**Isabel**, design CarlesiTonelli

196



**Queen**

146



**Fast**, design R&D Torre

206



**Manu**, design R&D Torre

152



**Vesper**, design R&D Torre

212



**Papas**, design studioPANG

166



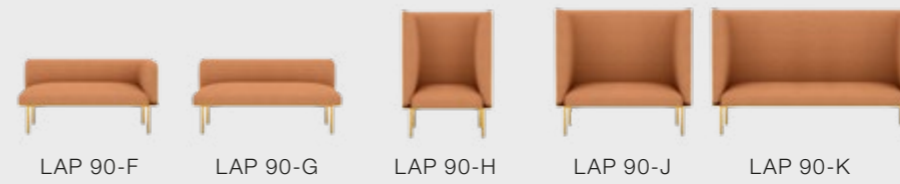
**Conference**, design R&D Torre

220



**Lap**, design studioPANG

228



Lap, design studioPANG

228



LAP 90-L LAP 90-M LAP 90-N LAP 90-P



LAP 90-Q LAP 90-R LAP 90-T LAP 90-V



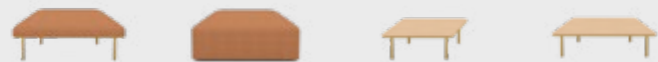
LAP 105-A LAP 105-B LAP 105-C LAP 105-D LAP 105-E



LAP 105-F LAP 105-G LAP 105-H LAP 105-J LAP 105-K



LAP 105-L LAP 105-M LAP 105-N LAP 105-P LAP 105-Q



LAP 105-R LAP 105-S LAP 105-T LAP 105-U

Ren, design CarlesiTonelli

242



DINE 1 LOW 130 LOW DINE 2 LOW DINE CORNER LOW DINE 1 MID DINE 2 MID DINE CORNER MID



DINE 1 HIGH DINE 2 HIGH DINE CORNER HIGH OFFICE 1 MID OFFICE 2 MID OFFICE 1 HIGH OFFICE 2 HIGH

Ren, design CarlesiTonelli

242



WAIT 1 WAIT 2 BENCH TABLE

Med, design CarlesiTonelli

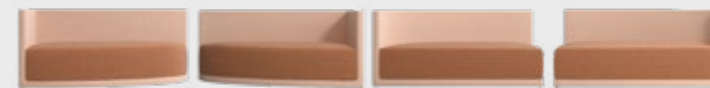
256



MED 1 MED 2 MED 3 MED 4 MED 5 MED 6

Portopiccolo

262



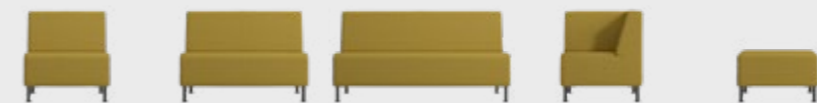
PORTOPICCOLO 1 PORTOPICCOLO 2 PORTOPICCOLO 3 PORTOPICCOLO 4

America, design R&D Torre

270



1 SEATER HIGH 2 SEATER HIGH 3 SEATER HIGH CORNER HIGH



1 SEATER LOW 2 SEATER LOW 3 SEATER LOW CORNER LOW OTTOMAN

Jewel, design R&D Torre

278



05 09

Lina, design R&D Torre

284



05

Arty, design CarlesiTonelli

290



01 02 03 04 CEILING&WALL 1 CEILING&WALL 2

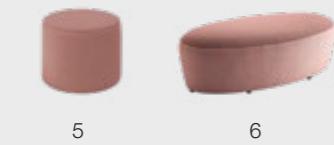
Mou, design studioPANG

294



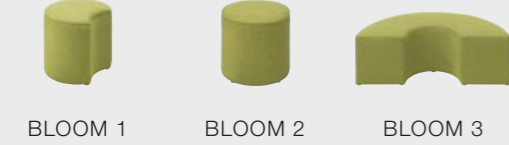
Molecule, design R&D Torre

304



Bloom, design R&D Torre

312



One, design R&D Torre

320



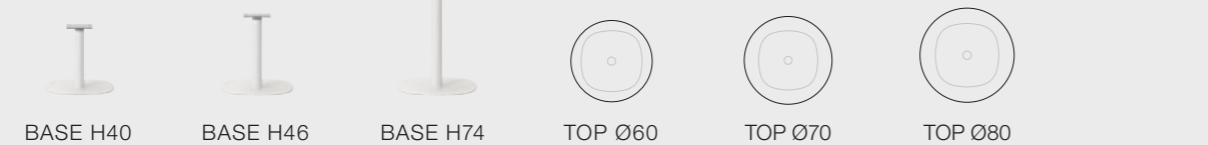
Penta, design CarlesiTonelli

324



Pongo, design R&D Torre

330



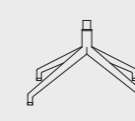
# Bases



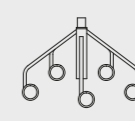
Base 100



Base 101



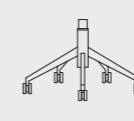
Base 102



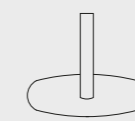
Base 103



Base 105



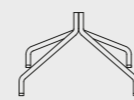
Base 106



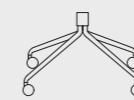
Base 107



Base 108



Base 110



Base 111



Base 113



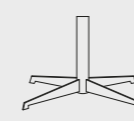
Base 114



Base 115



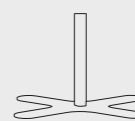
Base 117



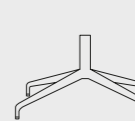
Base 120



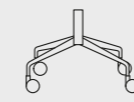
Base 121



Base 122



Base 127



Base 128



Base 129



Base 130



Base 131



Base 132

# Certifications, legend



GREENGUARD certified product



ISO certified

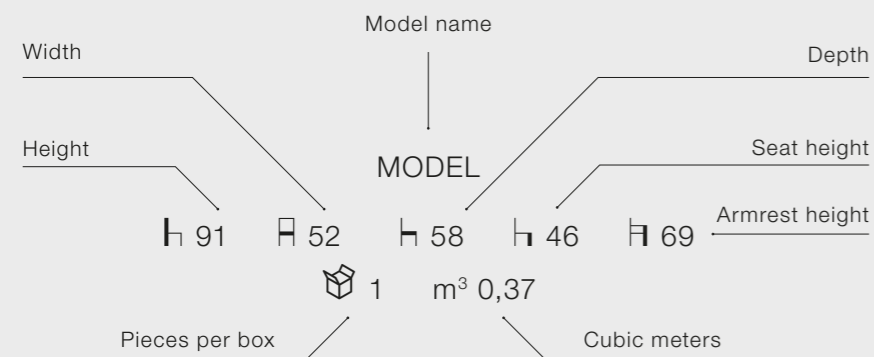
ISO certification is a seal of approval from a third party body that a company runs to one of the international standards developed and published by the International Organization for Standardization (ISO).

The Greenguard Environmental Institute (Aka "GREENGUARD") is an industry-independent organization that aims to protect human health and improve quality of life by enhancing indoor air quality and reducing people's exposure to chemicals and other pollutants.

Since 1991 CATAS is a testing laboratory accredited (n. 0027) according to EN ISO/IEC 17025 standard.



CATAS certified product



All dimensions are expressed in centimetres.

At its sole discretion, the company reserves the right to change dimensions and type of construction, and to make improvements and other changes to its products.

The printing process does not give a perfect reproduction of the colours. For more accuracy, it is advisable to refer to the samples of materials available on request. All reproduction rights of all or part of the designs and illustrations are reserved worldwide.



Stackable product



Product suitable for outdoor use

# Advanced Seating Solutions



# Nirvana



## Harmonious profile

design Paolo Martinig

Let yourself be welcomed by the sinuosity of these shapes and surrender to extreme comfort. The harmonious profile of its curves is also available in the low back version with a wide choice of wooden and metal frames. Ideal for lounge areas, hotel rooms and living spaces.

Nirvana is a furniture masterpiece that defines the space with its sophisticated personality. The accuracy in manufacturing and the charming combination of materials and finishes make this fabulous product an icon in the category of lounge chairs.

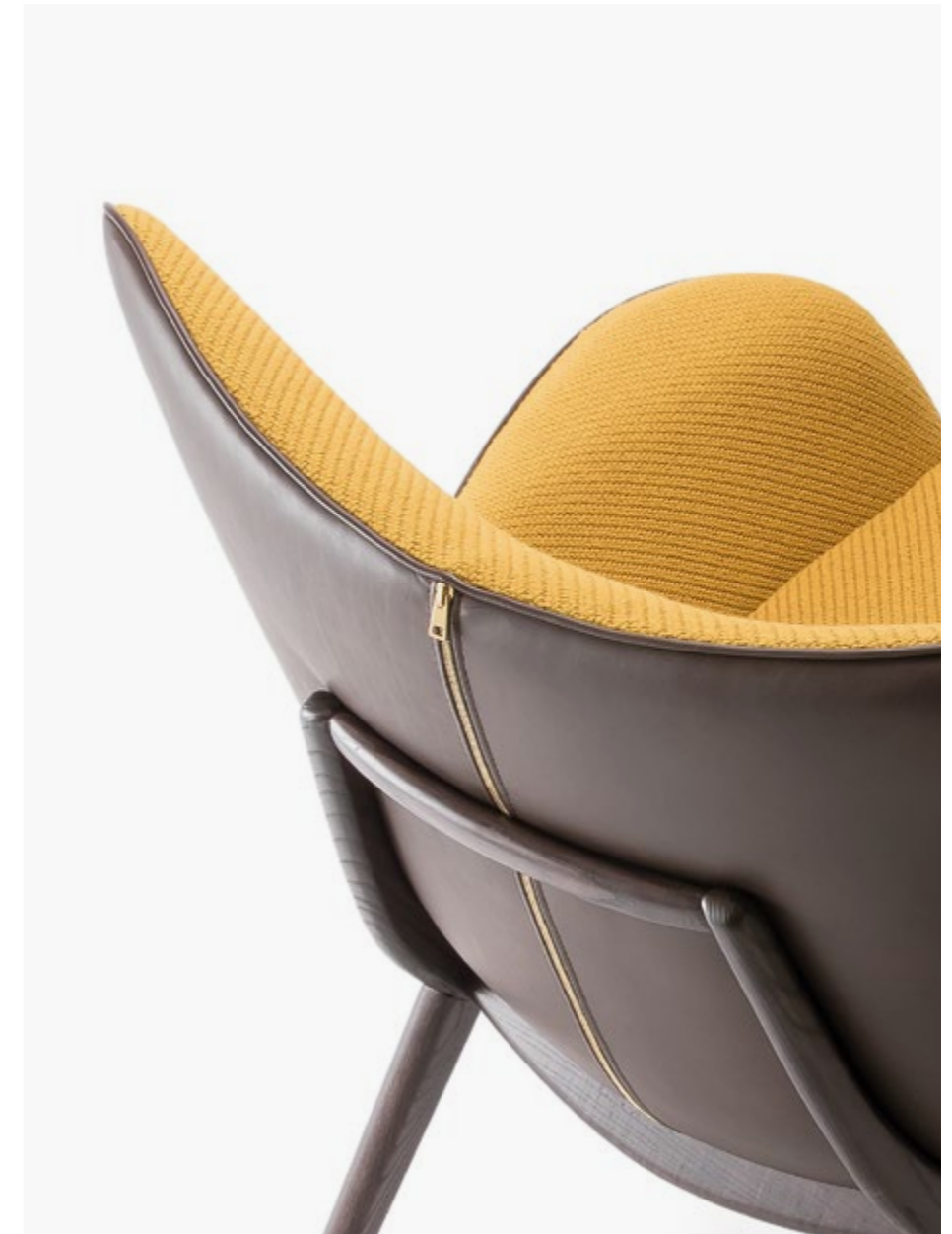














## Collection



NIRVANA BERGERE  
H 115 H 90 H 94 H 43  
1 m³ 1,08



NIRVANA 05  
H 84 H 90 H 93 H 42  
1 m³ 0,75



NIRVANA 08  
H 39 H 58 H 45  
2 m³ 0,31

## Base options



BASE 122



BASE 124



BASE 125



BASE 127



BASE 128



BASE 129



BASE 132



BASE 122



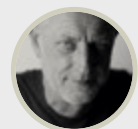
BASE 124



BASE 125



BASE 132



Design  
Paolo Martinig

Born in Cividale, Italy, in 1962. After completing his studies in 1986, he started working in the communications industry in Milan, Treviso and Udine. In 1994, he transferred his expertise to the world of design. Communications and creativity are only a step apart, so

Martinig started to successfully collaborate with top Italian fashion groups, carrying out significant international projects. He has also worked for renowned furniture and nautical companies. In 2010 he was selected for the ADI DESIGN INDEX and for the Compasso D'Oro award.

At its sole discretion, the company reserves the right to change dimensions and type of construction, and to make improvements and other changes to its products. The printing process does not give a perfect

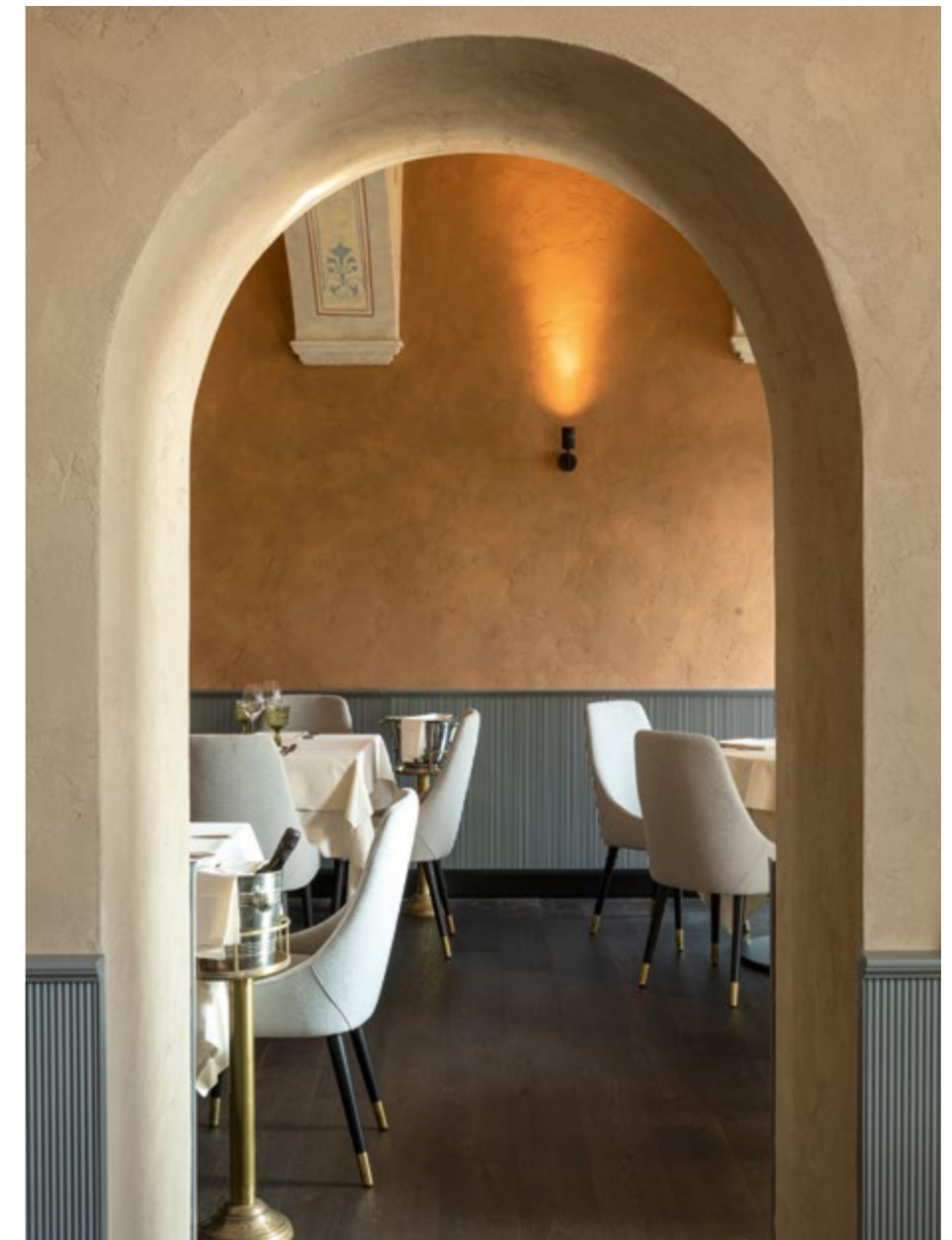
reproduction of the colours. For more accuracy, it is advisable to refer to the samples of materials available on request. All reproduction rights of all or part of the designs and illustrations are reserved worldwide.

# Adima



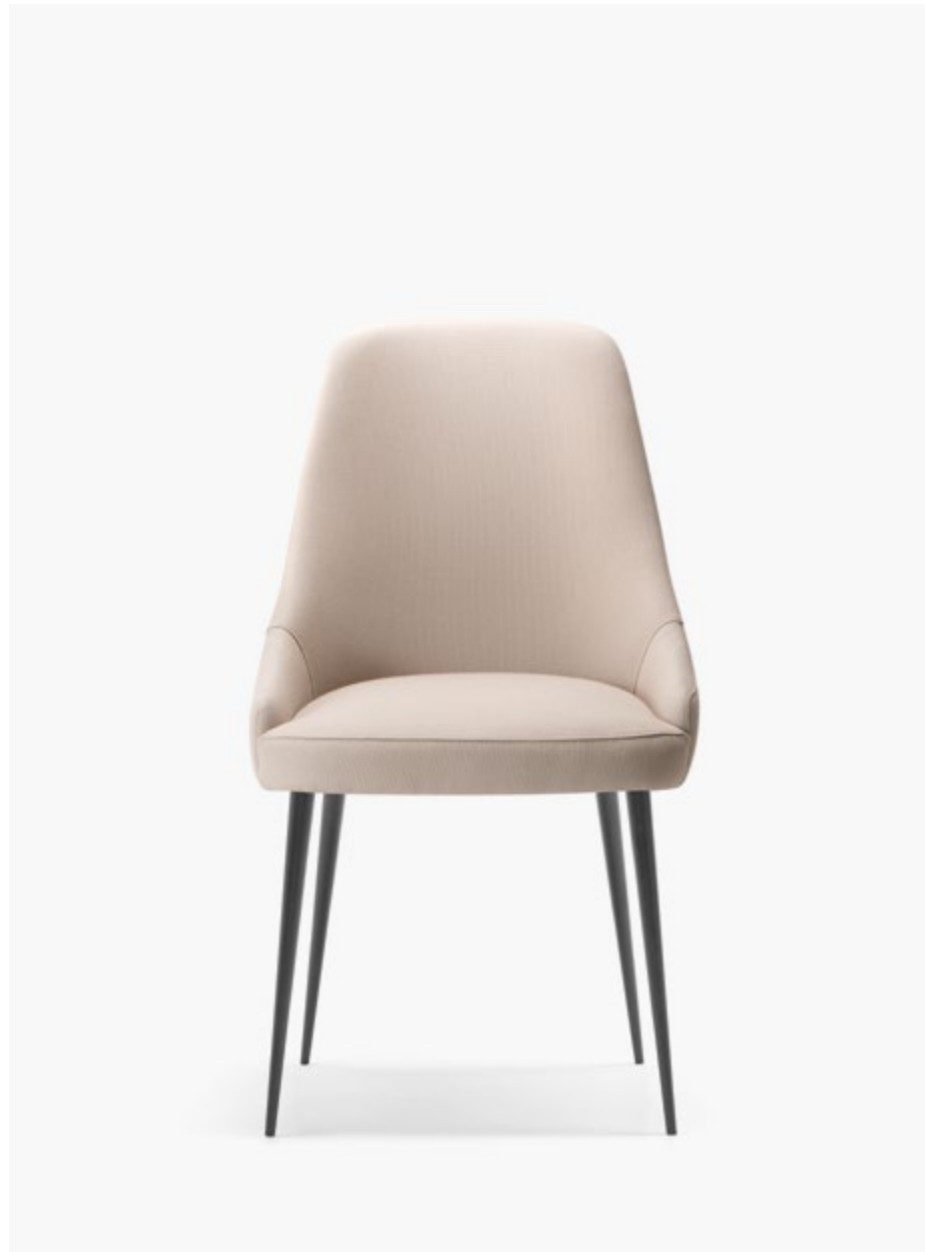
## A comforting feeling

design CarlesiTonelli



Revisiting tradition through the use of modern design, and capturing a deep sense of well-being and harmony in the most diverse public and domestic environments. Exploring endless possibilities of use and arrangement by way of simple, straightforward and at the same time elegant designs.

Adima interprets the concept of chair through refined minimalism. The clean-cut and cocooning shape of the frame, available in several versions, embraces its user while meeting the requirements of any interior design project.















## Collection



ADIMA 00  
H 85 P 50 H 56 H 47  
1 m³ 0,37



ADIMA 01  
H 91 P 51 H 58 H 48  
1 m³ 0,37



ADIMA 04  
H 91 P 52 H 58 H 48 H 69  
1 m³ 0,37



ADIMA 05  
H 89 P 64 H 76 H 42  
1 m³ 0,51



ADIMA 05 XL  
H 89 P 80 H 80 H 42  
1 m³ 0,72



ADIMA 07  
H 102 P 53 H 56 H 75  
1 m³ 0,41



ADIMA 09 HB  
H 120 P 125 H 79 H 42  
1 m³ 1,6

## Base options



BASE 100



BASE 102



BASE 103



BASE 106



BASE 107



BASE 110



BASE 111



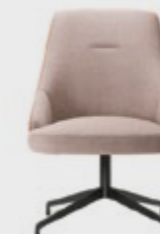
BASE 113



BASE 120



BASE 121



BASE 127



BASE 128



BASE 101



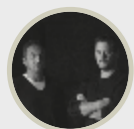
BASE 108



BASE 115



BASE 117



Design  
CarlesiTonelli

Combining different areas of expertise and careers in industrial design, they founded their studio in 2004. They link a passion for design to their knowledge of materials and technologies, and producers' demands to the market trends. They accept the challenge to find

new meanings in simple things, adding harmonious and friendly shapes to both private and public scenarios. Design, art direction and communications are the fields where they perform and interact with customers, in a relationship sharing values and goals.

At its sole discretion, the company reserves the right to change dimensions and type of construction, and to make improvements and other changes to its products. The printing process does not give a perfect

reproduction of the colours. For more accuracy, it is advisable to refer to the samples of materials available on request. All reproduction rights of all or part of the designs and illustrations are reserved worldwide.



# Magda



## Practical and charming

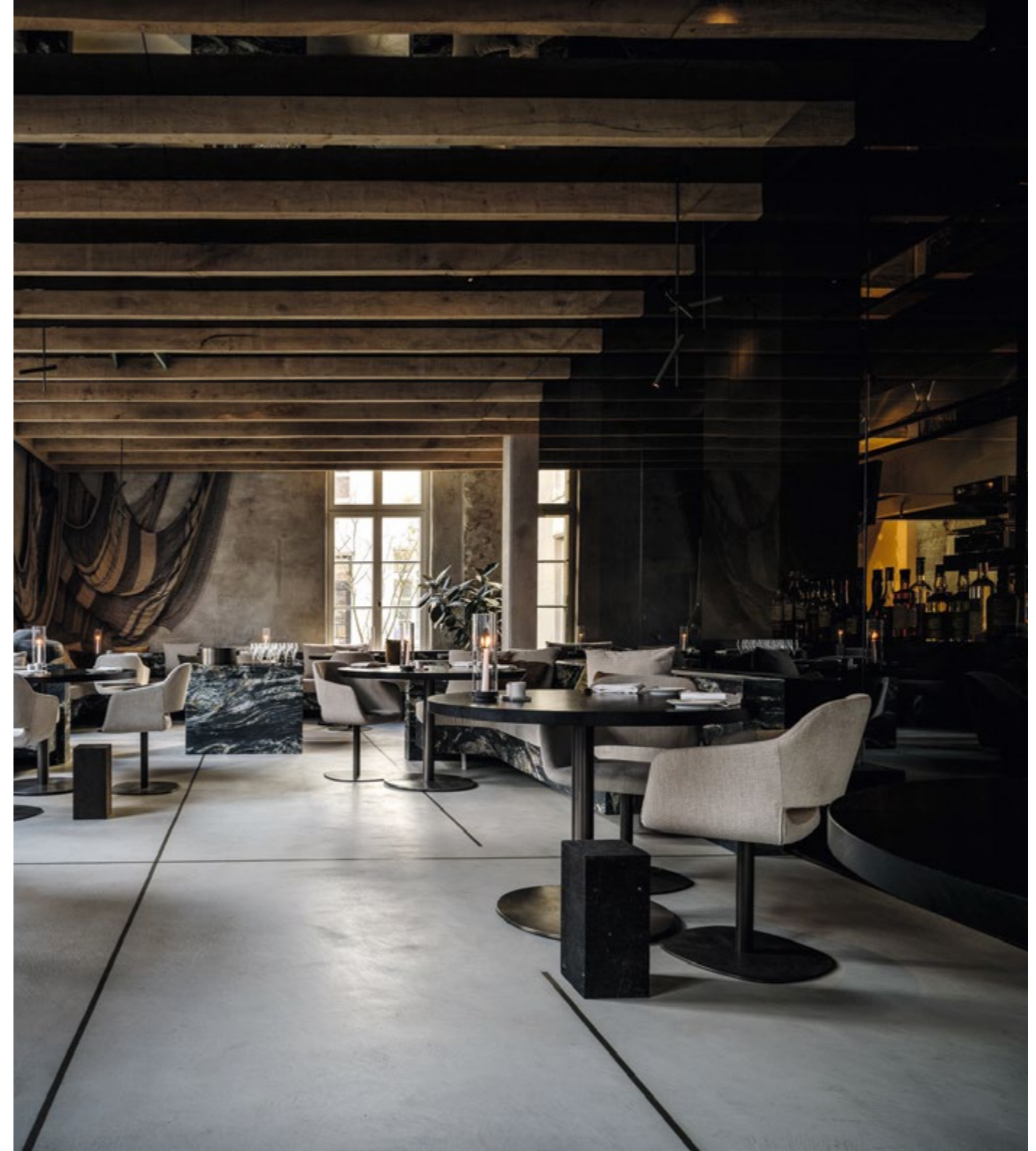
design CarlesiTonelli

A simple and embracing shape and a well-placed gap that adds an airy touch to its design underly a collection of chairs and sofas that has become a real bestseller in the sector of commercial interiors. Magda is suitable for the most diverse environments, from the hospitality industry to public spaces and executive offices.

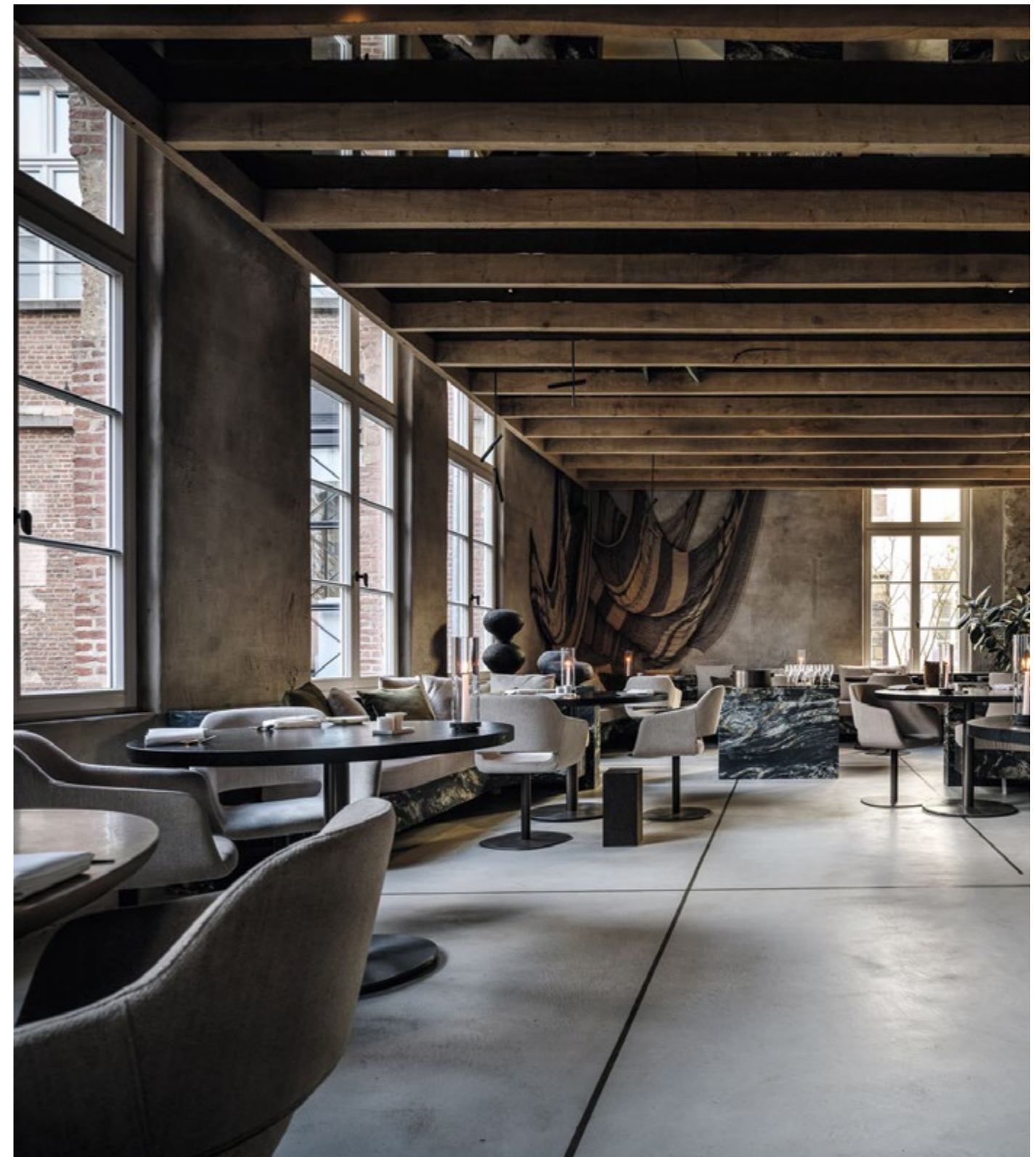
It merges soft and sophisticated shapes with its practical gap between the seat and the backrest, making the chairs easy to move around and clean. Magda comes in a variety of frames and bases, making it suitable for any interior décor and use.













**ON THE LEFT.** Project: Radisson Blu,  
Rostock, Germany.  
Interior Design: Ocean Architects.







**ON THE LEFT.** Project: Radisson Blu,  
Rostock, Germany.  
Interior Design: Ocean Architects.

# Collection



MAGDA 00  
H 85 P 54 H 58 H 47  
1 m³ 0,31



MAGDA 01  
H 91 P 57 H 61 H 47  
1 m³ 0,4



MAGDA 04  
H 81 P 63 H 61 H 47 H 69  
1 m³ 0,38



MAGDA 05  
H 82 P 70 H 66 H 42 H 64  
1 m³ 0,52



MAGDA 05 LOUNGE  
H 101 P 70 H 66 H 42 H 64  
1 m³ 0,64



MAGDA 06  
H 82 P 65 H 60 H 47 H 64  
1 m³ 0,38



MAGDA 07  
H 99 P 53 H 55 H 75  
1 m³ 0,42



MAGDA 09  
H 80 P 126 H 61 H 44 H 68  
1 m³ 0,77

# Base options



BASE 100



BASE 102



BASE 103



BASE 105



BASE 106



BASE 107



BASE 110



BASE 111



BASE 113



BASE 114



BASE 120



BASE 121



BASE 127



BASE 128



BASE 134



BASE 101



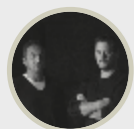
BASE 108



BASE 115



BASE 117



Design  
CarlesiTonelli

Combining different areas of expertise and careers in industrial design, they founded their studio in 2004. They link a passion for design to their knowledge of materials and technologies, and producers' demands to the market trends. They accept the challenge to find

new meanings in simple things, adding harmonious and friendly shapes to both private and public scenarios. Design, art direction and communications are the fields where they perform and interact with customers, in a relationship sharing values and goals.

At its sole discretion, the company reserves the right to change dimensions and type of construction, and to make improvements and other changes to its products. The printing process does not give a perfect

reproduction of the colours. For more accuracy, it is advisable to refer to the samples of materials available on request. All reproduction rights of all or part of the designs and illustrations are reserved worldwide.





# Margot

## Versatility with character

design CarlesiTonelli



Margot merges two essential features into one design concept. Shaped as a chair and embracing like an armchair, it blends in perfectly with tables and desks, while also lending itself to a more comfortable use by simply changing its base. Its flexibility does not in any way affect its ability to make each and every environment stand out with its unusual design.

The gap between the seat and the backrest makes Margot very practical to use, easy to clean and move around, as well as highly dynamic and unique. It comes in a variety of wooden or metal bases and legs, either fixed or on castors, in order to meet any type of use and interior design requirement. The stool version expands the collection boundaries further.







**ON THE RIGHT.** Project: Chiurlo  
Multifunctional representative space,  
Campofornido, Italy.  
Interior Design: Visual Display.





Margot



Project: Chiurlo  
Multifunctional representative space,  
Campoformido, Italy.  
Interior Design: Visual Display.

# Collection



MARGOT 02  
H 80 P 55 H 59 H 47  
1 m³ 0,31



MARGOT 04  
H 83 P 60 H 59 H 47  
1 m³ 0,38



MARGOT 05  
H 86 P 68 H 67 H 42  
1 m³ 0,52



MARGOT 07  
H 115 P 59 H 62 H 76  
1 m³ 0,48



MARGOT 07 XL  
H 120 P 68 H 67 H 76  
1 m³ 0,65

# Base options



BASE 100



BASE 102



BASE 103



BASE 105



BASE 106



BASE 107



BASE 110



BASE 111



BASE 113



BASE 114



BASE 120



BASE 121



BASE 127



BASE 128



BASE 131



BASE 101



BASE 108



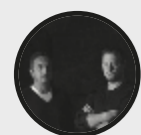
BASE 130



BASE 115



BASE 117



Design  
CarlesiTonelli

Combining different areas of expertise and careers in industrial design, they founded their studio in 2004. They link a passion for design to their knowledge of materials and technologies, and producers' demands to the market trends. They accept the challenge to find

new meanings in simple things, adding harmonious and friendly shapes to both private and public scenarios. Design, art direction and communications are the fields where they perform and interact with customers, in a relationship sharing values and goals.

At its sole discretion, the company reserves the right to change dimensions and type of construction, and to make improvements and other changes to its products. The printing process does not give a perfect

reproduction of the colours. For more accuracy, it is advisable to refer to the samples of materials available on request. All reproduction rights of all or part of the designs and illustrations are reserved worldwide.



# Megan



## Comfort for all

design CarlesiTonelli

The sinuous shape of the wingback armrests is the distinctive feature of this comfortable and versatile chair. This is not just an aesthetically appealing detail: this shape is designed with easy-to-grip arms that make it suitable for people of all ages and physical conditions. The gap between the backrest and the seat adds to the airy contour of the chair, while making it easy to clean and move around.

A wide selection of wooden or metal bases and legs, either fixed or on castors, makes Megan suitable for different environments, such as wellness clubs, health care centres and public spaces. The generously sized bergère version is highly iconic. The tall backrest adds additional ergonomics and comfort to the overall design, making it an absolute hit in office interiors as well.











# Collection



MEGAN 04  
H 81 P 71 H 67 H 47 H 69  
1 m³ 0,41



MEGAN 05  
H 82 P 80 H 66 H 42 H 63  
1 m³ 0,52



MEGAN 05 ERGO  
H 125 P 80 H 70 H 47 H 68  
1 m³ 0,83



MEGAN 06 ERGO  
H 126 P 74 H 67 H 49 H 68  
1 m³ 0,83



MEGAN BERGERE  
H 122 P 82 H 74 H 42 H 63  
1 m³ 0,83



MEGAN BERGERE SOFA  
H 123 P 136 H 80 H 42 H 63  
1 m³ 1,60

# Base options



BASE 100



BASE 102



BASE 103



BASE 105



BASE 106



BASE 107



BASE 110



BASE 111



BASE 113



BASE 114



BASE 120



BASE 121



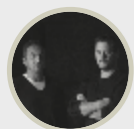
BASE 127



BASE 128



BASE 134



Design  
CarlesiTonelli

Combining different areas of expertise and careers in industrial design, they founded their studio in 2004. They link a passion for design to their knowledge of materials and technologies, and producers' demands to the market trends. They accept the challenge to find

new meanings in simple things, adding harmonious and friendly shapes to both private and public scenarios. Design, art direction and communications are the fields where they perform and interact with customers, in a relationship sharing values and goals.

At its sole discretion, the company reserves the right to change dimensions and type of construction, and to make improvements and other changes to its products. The printing process does not give a perfect

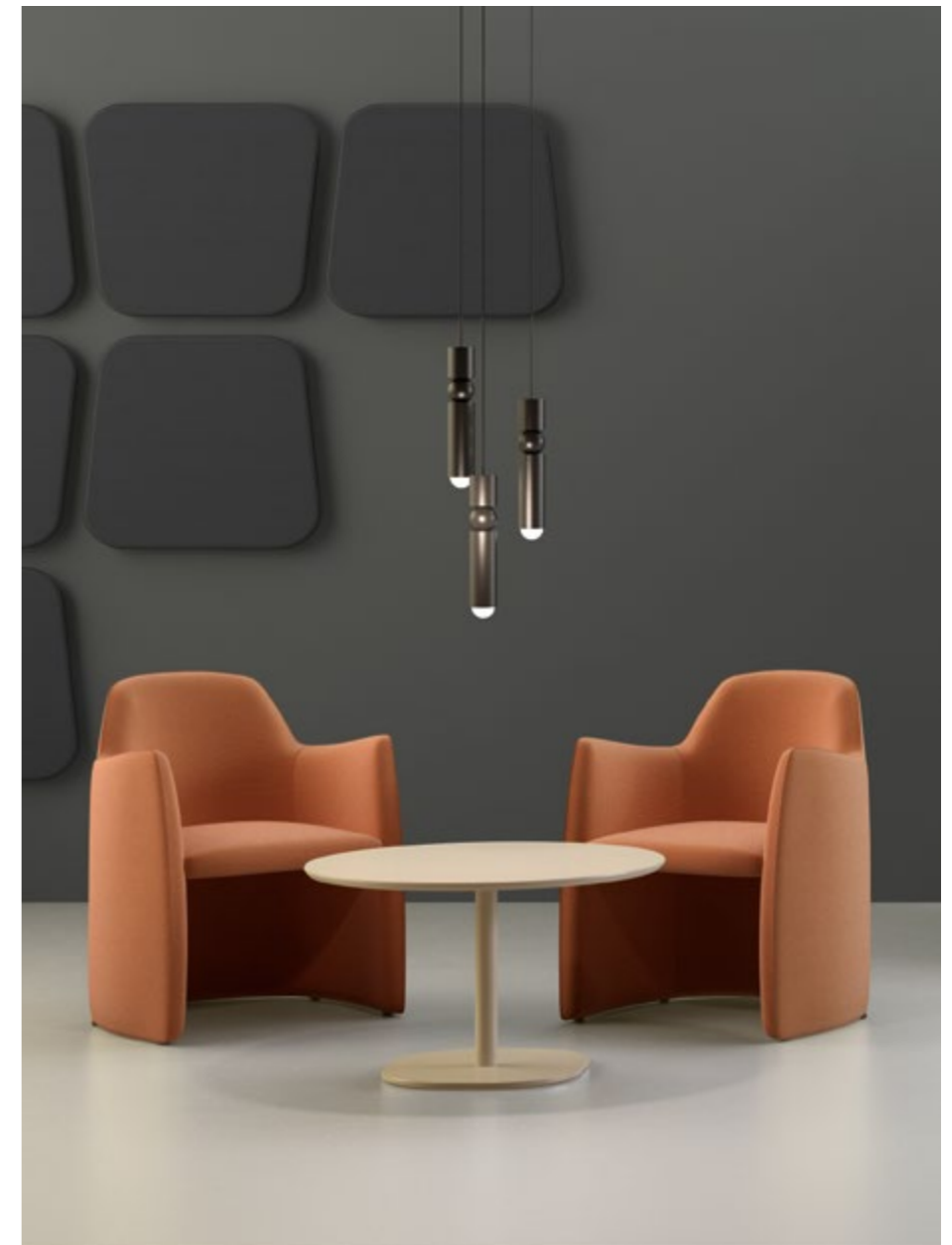
reproduction of the colours. For more accuracy, it is advisable to refer to the samples of materials available on request. All reproduction rights of all or part of the designs and illustrations are reserved worldwide.



## Kesy

### Original design

design CarlesiTonelli



A glance at Kesy is all it takes to seduce you with its tapered backrest, sinuous armrests and fine and elegant lines. The underlying design concept takes on the most diverse shapes, whilst retaining its unique and unmistakable personality.

Kesy lends itself to countless interior décor solutions and unforgettable experiences: small sofas and armchairs for the waiting room or the lounge area, functional chairs for the office or meeting areas, armchairs designed for gourmet restaurants and stools for trendy bars and clubs.





Project: Kronplatz Touristik,  
Brunico, Italy.









# Collection



KESY 01  
H 83 P 53 H 58 H 47  
1 m³ 0,49



KESY 04  
H 83 P 60 H 61 H 47 H 69  
1 m³ 0,38



KESY 05  
H 84 P 72 H 66 H 43 H 65  
1 m³ 0,52



KESY 05 HB  
H 102 P 72 H 66 H 45 H 69  
1 m³ 0,64



KESY 07  
H 100 P 55 H 59 H 75  
1 m³ 0,41



KESY 09  
H 78 P 128 H 61 H 46 H 64  
1 m³ 0,73



KESY 09 HB  
H 118 P 124 H 79 H 42 H 68  
1 m³ 1,15



KESY 14  
H 84 P 72 H 63 H 48 H 69  
1 m³ 0,58

# Base options



BASE 100



BASE 102



BASE 103



BASE 105



BASE 106



BASE 107



BASE 110



BASE 111



BASE 113



BASE 114



BASE 120



BASE 127



BASE 128



BASE 101



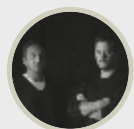
BASE 108



BASE 115



BASE 117



Design  
CarlesiTonelli

Combining different areas of expertise and careers in industrial design, they founded their studio in 2004. They link a passion for design to their knowledge of materials and technologies, and producers' demands to the market trends. They accept the challenge to find

new meanings in simple things, adding harmonious and friendly shapes to both private and public scenarios. Design, art direction and communications are the fields where they perform and interact with customers, in a relationship sharing values and goals.

At its sole discretion, the company reserves the right to change dimensions and type of construction, and to make improvements and other changes to its products. The printing process does not give a perfect

reproduction of the colours. For more accuracy, it is advisable to refer to the samples of materials available on request. All reproduction rights of all or part of the designs and illustrations are reserved worldwide.



## Bliss



## Joie de vivre

design CarlesiTonelli

With its playful and inviting shape, inspired by minimal floral designs, Bliss brings fun and lightness to every interior décor project. Textures and colours jazz up its lean but embracing lines, enriched by skilfully handcrafted stitching details that emphasise the quality of each creation.

The gap between the seat and the backrest adds an airy touch to the dynamic and embracing armchair version, which is even more practical to handle, clean and move around. This makes Bliss suitable for use in the most diverse settings, from public areas to hotels and office interiors, owing to a wide selection of bases and legs, both fixed and on castors.







**ON THE RIGHT.** Project: Radisson Hotel,  
Bucharest, Romania.  
Interior Design: Creneau International.



## Collection



BLISS 01  
H 80 P 57 H 56 H 46  
1 m³ 0,31



BLISS 02  
H 81 P 54 H 58 H 46 H 66  
1 m³ 0,38



BLISS 04  
H 85 P 59 H 61 H 46 H 69  
1 m³ 0,38



BLISS 05  
H 83 P 74 H 72 H 45 H 68  
1 m³ 0,52



BLISS 05 HB  
H 98 P 74 H 72 H 45 H 68  
1 m³ 0,64



BLISS 09  
H 80 P 127 H 61 H 46 H 65  
1 m³ 0,73

## Base options



BASE 100



BASE 102



BASE 103



BASE 105



BASE 106



BASE 107



BASE 110



BASE 111



BASE 113



BASE 114



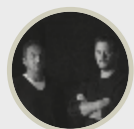
BASE 120



BASE 127



BASE 128



Design  
CarlesiTonelli

Combining different areas of expertise and careers in industrial design, they founded their studio in 2004. They link a passion for design to their knowledge of materials and technologies, and producers' demands to the market trends. They accept the challenge to find

new meanings in simple things, adding harmonious and friendly shapes to both private and public scenarios. Design, art direction and communications are the fields where they perform and interact with customers, in a relationship sharing values and goals.

At its sole discretion, the company reserves the right to change dimensions and type of construction, and to make improvements and other changes to its products. The printing process does not give a perfect

reproduction of the colours. For more accuracy, it is advisable to refer to the samples of materials available on request. All reproduction rights of all or part of the designs and illustrations are reserved worldwide.



## Da Vinci



## Contemporary classic

design Konzept Stockholm™

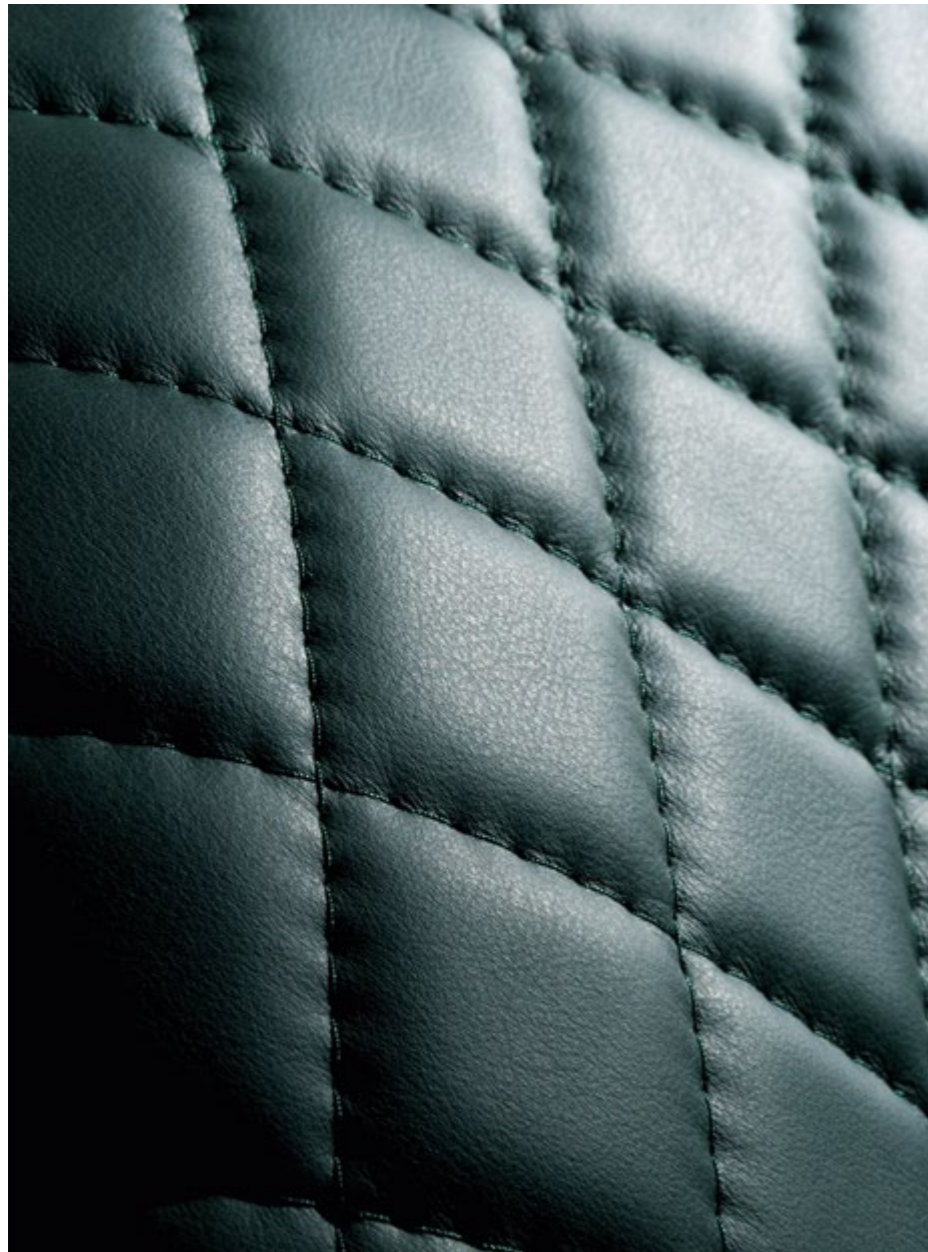
This versatile collection boasts a variety of styles and uses, and features rounded and soft shapes that suit any interior décor and lifestyle. Da Vinci finds countless applications, encompassing public spaces as well as more private settings for a comfortable and relaxing retreat.

The fabric textures, the quality of leather, the tailoring of the stitching, the warmth of wood: the charm exuding from the Da Vinci collection results from a combination of materials, colours and different finishes, merging craftsmanship and modern sophistication into each creation.



Project: Vitello D'Oro, Udine, Italy.  
Interior Design: Visual Display.  
Photography: Alessandro Paderni Eye Studio.

Da Vinci







# Collection

# Base options



DA VINCI -01  
H 83 P 49 H 53 H 48  
1 m³ 0,36



DA VINCI 02  
H 83 P 57,5 H 73 H 48 H 61  
1 m³ 0,41



DA VINCI 03  
H 81 P 61 H 67 H 48 H 64  
1 m³ 0,41



DA VINCI 04  
H 88 P 57,5 H 73 H 48 H 66  
1 m³ 0,45



BASE 100



BASE 102



BASE 105



BASE 106



DA VINCI 05  
H 85 P 66 H 78 H 41 H 57  
1 m³ 0,52



DA VINCI 05 HB  
H 101 P 66 H 81 H 41 H 57  
1 m³ 0,64



DA VINCI 06  
H 85,5 P 60 H 70 H 48  
1 m³ 0,43



DA VINCI 07  
H 100 P 51 H 58,5 H 75  
1 m³ 0,43



BASE 107



BASE 113



BASE 120



BASE 127



DA VINCI 08  
P 40 P 51 P 39  
4 m³ 0,31



DA VINCI 09  
H 81 P 124,5 H 71 H 45 H 67  
1 m³ 0,76



DA VINCI 10  
H 83 P 49 H 53 H 48  
2 m³ 0,41



DA VINCI 11  
H 83 P 55 H 53 H 48 H 67  
1 m³ 0,37



BASE 128



BASE 101



BASE 108



BASE 115



DA VINCI 12  
H 83 P 65 H 58 H 48 H 64  
1 m³ 0,40



DA VINCI 12 STOOL  
H 111 P 65 H 58 H 77 H 93  
1 m³ 0,44

At its sole discretion, the company reserves the right to change dimensions and type of construction, and to make improvements and other changes to its products. The printing process does not give a perfect

reproduction of the colours. For more accuracy, it is advisable to refer to the samples of materials available on request. All reproduction rights of all or part of the designs and illustrations are reserved worldwide.



## Queen



## Tradition and innovation

Queen brings tradition and innovation together, merging enveloping comfort and engaging design. It hints to the past to seek and recreate a concept of timeless beauty, harmoniously combining lines and shapes.

The padded frame accommodates the body in a warm and comfortable embrace for unique moments of sheer relaxation. Its slender metal frame structure, available in different finishes, is one additional accent feature. The stool version, with a low, medium high or high backrest, further expands the use of this collection.





# Collection



QUEEN 10  
H 83 P 49 H 53 H 48  
☞ 2 m³ 0,41



QUEEN 06  
H 85 P 60 H 70 H 44  
☞ 1 m³ 0,43



QUEEN 07 LOW BACK  
H 86 P 52 H 53 H 75  
☞ 1 m³ 0,42



QUEEN 07 MID BACK  
H 98 P 52 H 55 H 75  
☞ 1 m³ 0,42



# Manu

## Sophisticated simplicity

design R&D Torre



Generous thickness and compact shape, clean-cut lines and sophisticated design. Manu has the extraordinary ability to provide a versatile array of different uses, while maintaining its unique style.

The choice between various types of wooden or metal bases and legs enables numerous product configurations, making it the ideal solution both in terms of style and usage.













## Collection



MANU 04

H 77 P 61 H 57,5 H 47 H 64  
 1 m³ 0,31



MANU 05

H 76 P 67 H 61 H 42 H 60  
 1 m³ 0,52



MANU 07

H 105 P 62 H 57,5 H 75 H 93  
 1 m³ 0,44

## Base options



BASE 100



BASE 102



BASE 103



BASE 105



BASE 106



BASE 107



BASE 110



BASE 111



BASE 113



BASE 114



BASE 120



BASE 101



BASE 108



BASE 115



# Papas

## The essence of elegance

design studioPANG



Sinuous and enveloping, but also delicate and with attention to detail, the Papas collection is characterised by two comfortable padded shells joined together by a subtle connection that ideally maintains the overlying backrest suspended in space.

The slender and light metal frame retraces the perimeter of the seat, supporting it and highlighting its design. The lounge version offers two backrest options: regular-sized or extra-large to provide a unique seating experience. Chair and armchair versions are available with sled base or four-legs base; both styles are stackable.



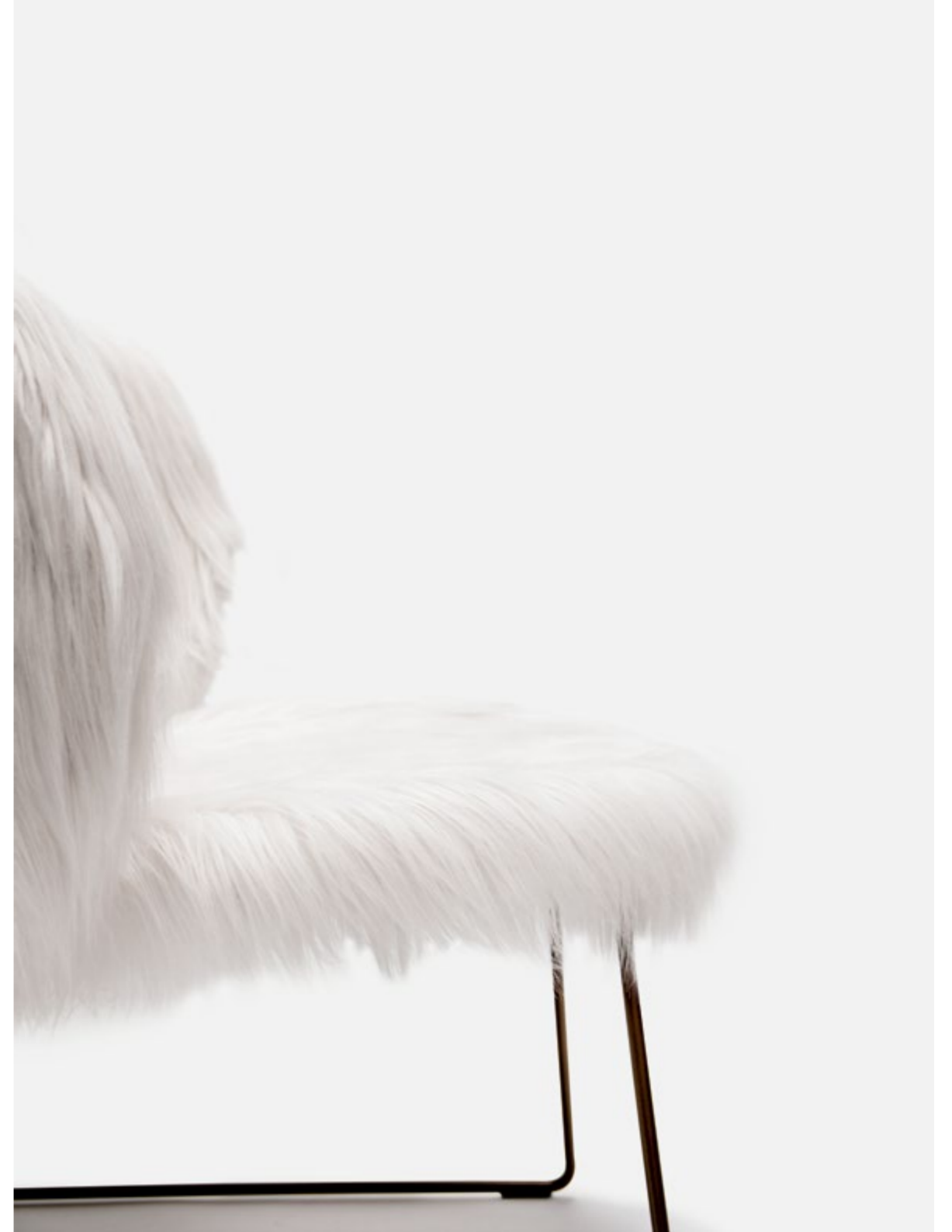






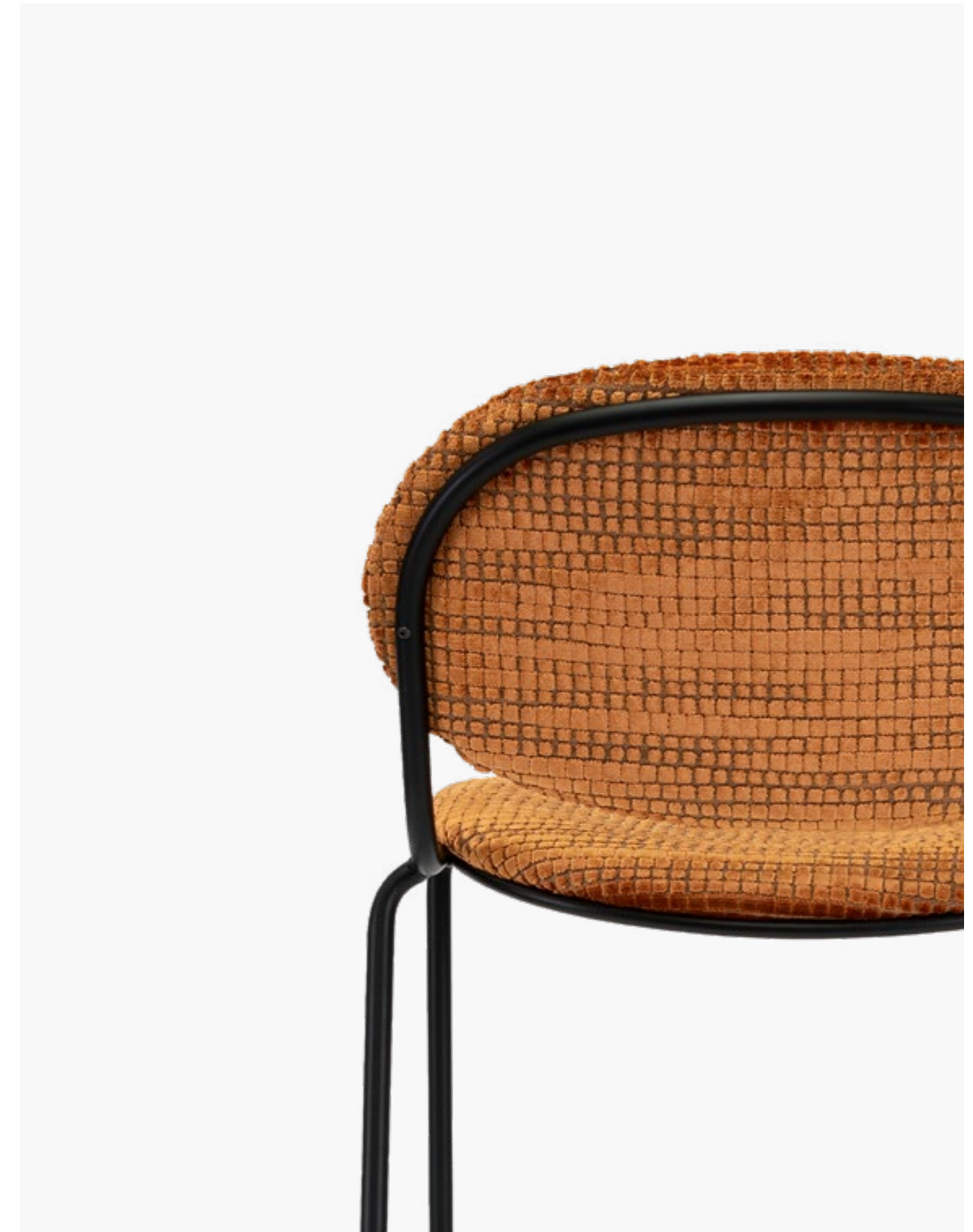
**ON THE RIGHT.** Project: STRAFhotel&bar,  
Milan, Italy.  
Photography: Max Zambelli.











# Collection



PAPAS 1-01  
H 84 P 53 H 58 H 48  
2 m³ 0,42



PAPAS 1-02  
H 84 P 56,5 H 58 H 48 H 71  
2 m³ 0,42



PAPAS 1-03  
H 84 P 62 H 58 H 48 H 71  
1 m³ 0,42



PAPAS 1-04  
H 84 P 62 H 58 H 71  
1 m³ 0,42



PAPAS 1-01



PAPAS 1-07



PAPAS 2-02



PAPAS 2-06



PAPAS 1-05  
H 84 P 67 H 75 H 44  
1 m³ 0,52



PAPAS 1-05 XL  
H 83 P 85 H 75 H 44  
1 m³ 0,78



PAPAS 1-07  
H 105 P 62 H 57,5 H 75  
2 m³ 0,55



PAPAS 1-08  
H 47 P 47 H 62 H 42  
1 m³ 0,24



PAPAS 2-01  
H 84 P 53 H 58 H 48  
2 m³ 0,42



PAPAS 2-02  
H 84 P 56,5 H 58 H 48 H 71  
2 m³ 0,42



PAPAS 2-06  
H 77 P 53 H 56 H 77  
2 m³ 0,38



PAPAS 2-07  
H 103 P 53 H 56 H 77  
2 m³ 0,42



PAPAS 2-10  
H 88 P 53 H 58 H 48  
2 m³ 0,42



PAPAS 2-11  
H 88 P 56,5 H 58 H 48 H 71  
2 m³ 0,42



PAPAS 3-01 OUTDOOR  
H 84 P 53 H 58 H 48  
2 m³ 0,42



Design  
studioPANG

Fabio Damiani and Marco Quistini set up studioPANG in October 2012, based on the shared idea that by combining diverse passions and skill sets, the approach to the project is enriched with new ideas and perspectives.

StudioPANG is a workshop – one that is constantly engaged on researching and developing ideas and projects; an open, dynamic environment that leverages a wealth of different experiences to give rise to a versatile and multi-faceted business.

At its sole discretion, the company reserves the right to change dimensions and type of construction, and to make improvements and other changes to its products. The printing process does not give a perfect

reproduction of the colours. For more accuracy, it is advisable to refer to the samples of materials available on request. All reproduction rights of all or part of the designs and illustrations are reserved worldwide.



## Caffè



### Dynamic and versatile

design Tom Kelley

Industrial inspirations and contemporary lifestyles merge into a product designed to express a dynamic concept of space, while providing higher standards of comfort. Caffè is a compact and versatile chair featuring a metal tubular frame suitable for any environment: from meeting rooms to trendy bars, communal areas or spaces for social gatherings.

Caffè comes with or without armrests, and in the stool version. It can be styled to look casual, formal or chic by simply changing the seat and backrest upholstery.





# Collection



CAFFÈ 01

H 82 H 50 H 56 H 49  
4 m³ 0,42



CAFFÈ 04

H 82 H 53 H 56 H 49 H 68  
4 m³ 0,42



CAFFÈ 07

H 99 H 50 H 55 H 76  
4 m³ 0,48



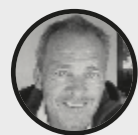
CAFFÈ 01



CAFFÈ 04



CAFFÈ 07



Design  
Tom Kelley

German designer and architect Tom Kelley was born in East Germany in 1951. After more than 2 years spent in prison for political reasons, he was liberated by the West German government. He studied in Aachen, Munich and Long Beach in California.

After collaborating with a bed furniture company, he opened his own studio in Munich and later on a branch in Venice, as he wanted to be closer to his Italian clients. He focuses mostly on chairs, trade fair stands and houses.

At its sole discretion, the company reserves the right to change dimensions and type of construction, and to make improvements and other changes to its products. The printing process does not give a perfect

reproduction of the colours. For more accuracy, it is advisable to refer to the samples of materials available on request. All reproduction rights of all or part of the designs and illustrations are reserved worldwide.



# Spoon



## Subtle seduction

design CarlesiTonelli

Wide, lean and softly concave, Spoon is a comfortable chair that invites you to sit back, relax and enjoy its generous shape.

Ideal as a reading chair, or in the lounge version for waiting areas, it also comes in the chair and stool version for public spaces and the office. Its sinuous shape is enhanced by the horizontal stitching of its upholstery.

## Collection



SPOON 01  
H 88 H 50 H 58 H 47  
2 m³ 0,38



SPOON 05 XL  
H 82 H 70 H 72 H 40  
2 m³ 0,51



SPOON 07  
H 103 H 47 H 56 H 76  
1 m³ 0,44

## Base options



BASE 100



BASE 102



BASE 103



BASE 105



BASE 106



BASE 107



BASE 110



BASE 111



BASE 113



BASE 114



BASE 120



BASE 121



BASE 127



BASE 101



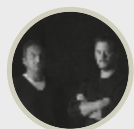
BASE 108



BASE 115



BASE 117



Design  
CarlesiTonelli

Combining different areas of expertise and careers in industrial design, they founded their studio in 2004. They link a passion for design to their knowledge of materials and technologies, and producers' demands to the market trends. They accept the challenge to find

new meanings in simple things, adding harmonious and friendly shapes to both private and public scenarios. Design, art direction and communications are the fields where they perform and interact with customers, in a relationship sharing values and goals.

At its sole discretion, the company reserves the right to change dimensions and type of construction, and to make improvements and other changes to its products. The printing process does not give a perfect

reproduction of the colours. For more accuracy, it is advisable to refer to the samples of materials available on request. All reproduction rights of all or part of the designs and illustrations are reserved worldwide.





# Isabel

## Totally versatile

design CarlesiTonelli



Isabel is an eclectic collection across the board. It encompasses the widest and most versatile array of seating options, suitable for any interior design project. It includes stackable chairs, fixed armchairs or on castors, office chairs and stools.

Isabel is ideally suited to design comfortable, functional and elegant interiors, as exemplified by several arrangements in the commercial sector.







# Collection



ISABEL 01  
H 87 P 51 H 54 H 47  
2 m³ 0,33



ISABEL 04  
H 87 P 56 H 54 H 47  
2 m³ 0,33



ISABEL 05  
H 81 P 60 H 56 H 43  
1 m³ 0,38



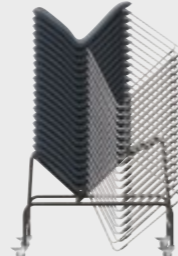
ISABEL 07  
H 104 P 46 H 56 H 75  
1 m³ 0,44



ISABEL 01



ISABEL 07



ISABEL TROLLEY

# Base options



BASE 100



BASE 102



BASE 103



BASE 105



BASE 106



BASE 107



BASE 110



BASE 111



BASE 113



BASE 114



BASE 120



BASE 121



BASE 101



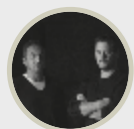
BASE 108



BASE 115



BASE 117



Design  
CarlesiTonelli

Combining different areas of expertise and careers in industrial design, they founded their studio in 2004. They link a passion for design to their knowledge of materials and technologies, and producers' demands to the market trends. They accept the challenge to find

new meanings in simple things, adding harmonious and friendly shapes to both private and public scenarios. Design, art direction and communications are the fields where they perform and interact with customers, in a relationship sharing values and goals.

At its sole discretion, the company reserves the right to change dimensions and type of construction, and to make improvements and other changes to its products. The printing process does not give a perfect

reproduction of the colours. For more accuracy, it is advisable to refer to the samples of materials available on request. All reproduction rights of all or part of the designs and illustrations are reserved worldwide.



# Fast

## Dynamic comfort

design R&D Torre



In a rapidly changing world, Fast is the right answer for the creation of dynamic, changeable but also comfortable and elegant interior décor solutions. The stackable version fits in beautifully in a variety of environments: from waiting rooms to auditoriums and meeting areas.

The swivel base version is perfect for working spaces, while the stools have additional applications in the hospitality industry. The ergonomic frame can be paired with different finishes and upholstery options, including two-tone front and back upholstery combinations.



# Collection



FAST 01  
 H 80 H 55 H 52 H 47  
 2 m³ 0,38



FAST 01



FAST TROLLEY

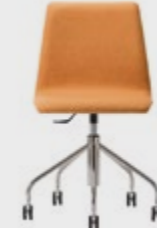
# Base options



BASE 100



BASE 102



BASE 103



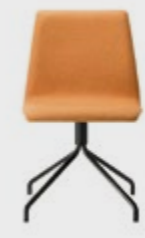
BASE 105



BASE 106



BASE 107



BASE 110



BASE 111



BASE 113



BASE 114



BASE 120



BASE 101



BASE 108



BASE 115



BASE 117





# Vesper



## Functional elegance

design R&D Torre

Vesper combines style and functionality seamlessly. This is the philosophy underlying a collection of stackable chairs and stools designed for communal areas. They are crafted with a sturdy metal frame and comfortable padded seats and backrests.

This model is the ideal conference chair thanks to the accessories it comes with. The linking brackets join the chairs in neat and straight lines. The armrest is fitted with a fold down writing tablet, and the chair trolley is used for carrying and storing stacked chairs. Bespoke upholstery and frame finishes are also available for this model.





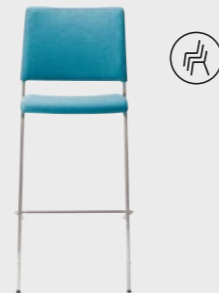
# Collection



VESPER 01  
H 84 P 50 H 52 H 47  
4 m<sup>3</sup> 0,42



VESPER 04  
H 84 P 54 H 52 H 47 H 67  
4 m<sup>3</sup> 0,42



VESPER 07  
H 114 P 49 H 51 H 75  
2 m<sup>3</sup> 0,44



VESPER 01



VESPER 04



VESPER 07



VESPER TROLLEY



## Conference



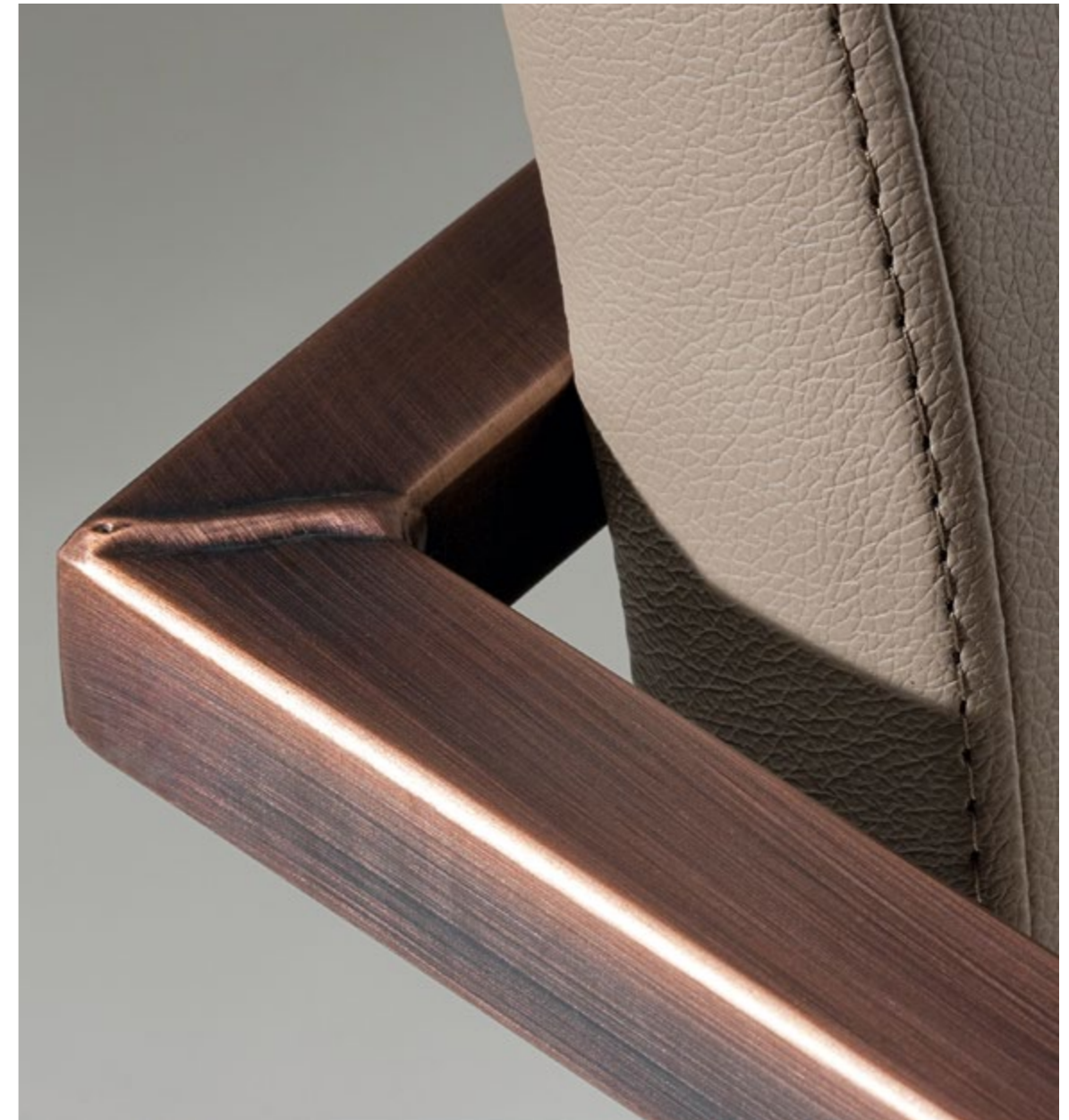
### Always in the lead

design R&D Torre

The sinuous surface of Conference instantly supports your body in a natural position. Its clean-cut design results from the desire to create chairs suitable for any kind of use and interior décor, as well as in combination with other furnishings.

Available in a range of different models to suit projects for any commercial setting.





## Collection



CONFERENCE 01  
H 88 H 66 H 54 H 47  
1 m³ 0,37



CONFERENCE 04  
H 88 H 66 H 54 H 47  
1 m³ 0,37

## Base options



BASE 102



BASE 103



BASE 106



BASE 107



BASE 110



BASE 111



BASE 150



BASE 151

## Shell



SHELL E



SHELL F



SHELL G



SHELL H





## Lap

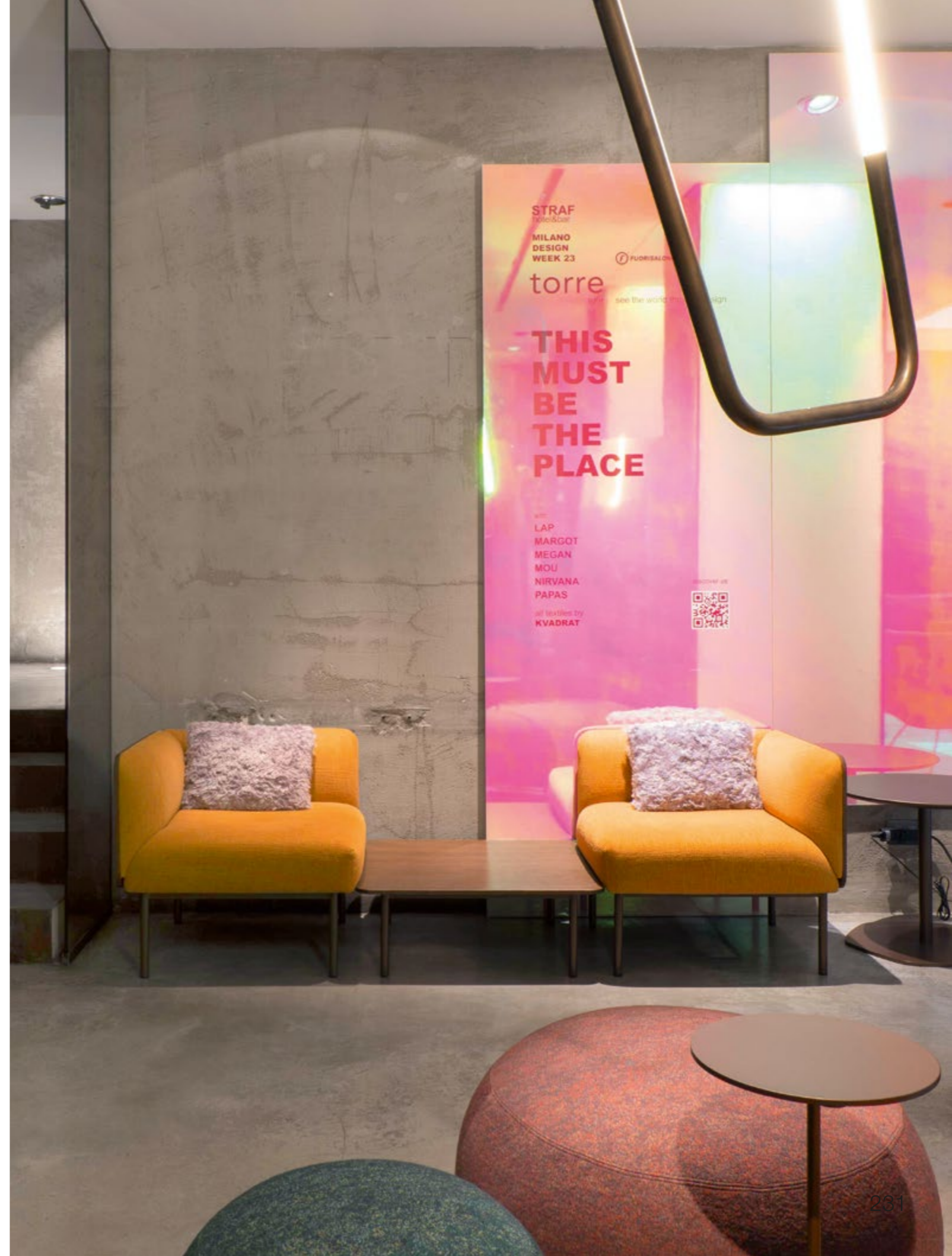


### Multifunctional modular seating system

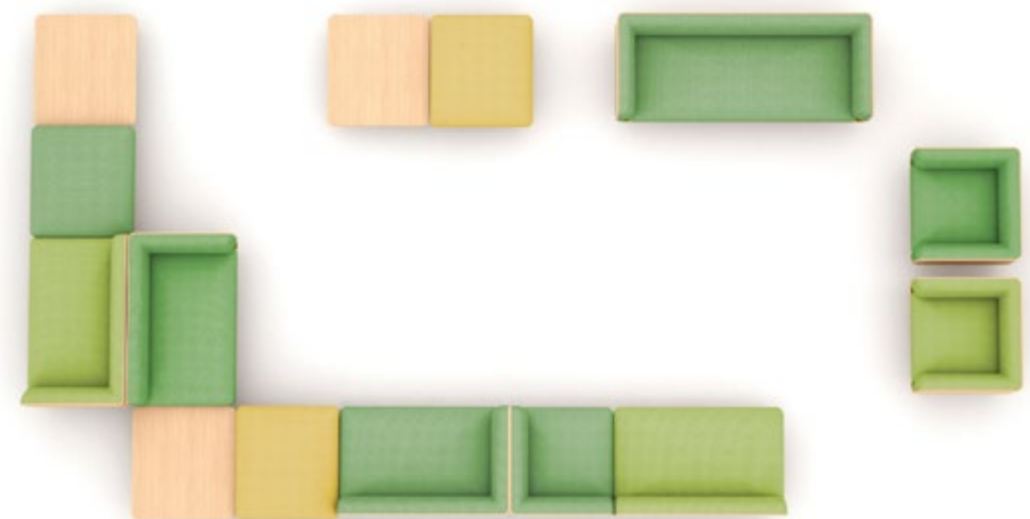
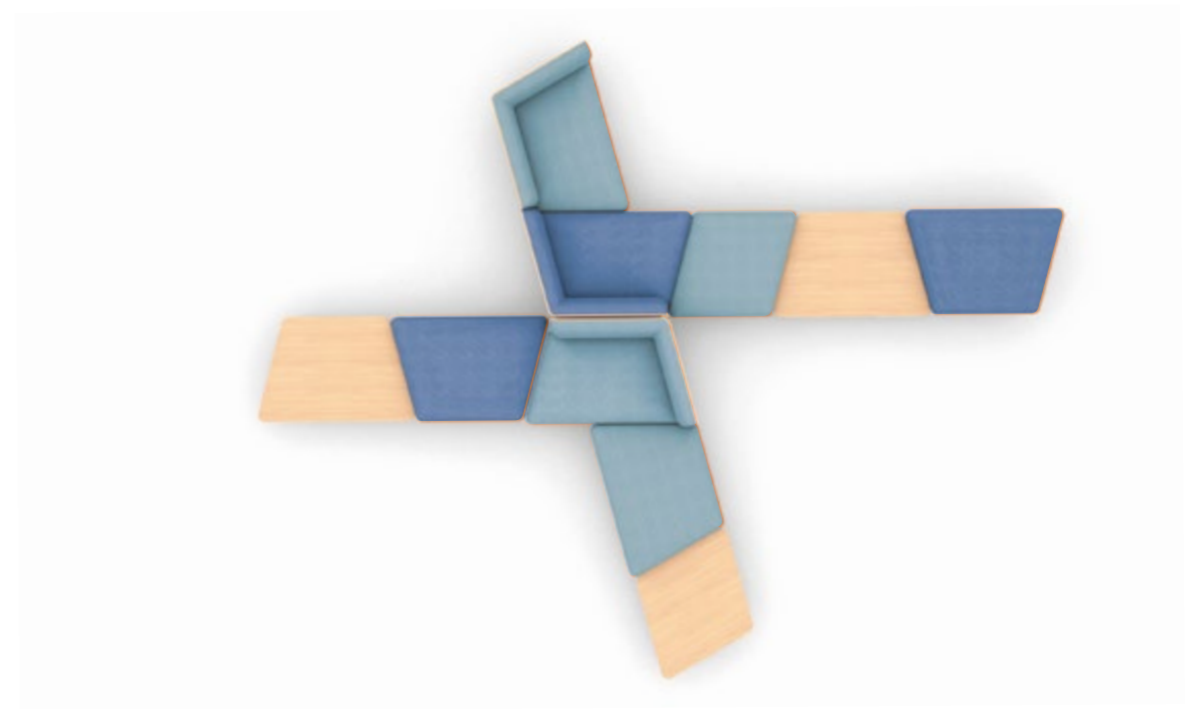
design studioPANG

Lap is not just a complete and articulated modular sofa system created for various environments, but a meeting point between formal synthesis, functional search and essential graphic design lines. A four-leg metal base supports the sinuous padded volumes, which give the products total comfort plus a marked horizontal and elegant line.

The backrest is embraced by a curved plywood frame that surrounds it, giving life to a sophisticated material combination between the upholstery and the essence of the wood. Two corner solutions are offered to combine the different elements (90° and 105°). All pieces are available also without the external wooden layer, for an overall fabric solution.









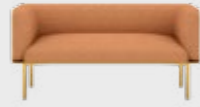


Project: STRAHotel&bar,  
Milan, Italy.  
Photography: Max Zambelli

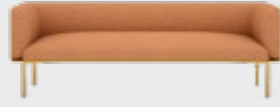
# Collection



LAP 90-A  
H 64 P 80 H 73 H 45  
1 m³ 0,50



LAP 90-B  
H 64 P 146 H 73 H 45  
1 m³ 0,90



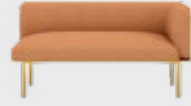
LAP 90-C  
H 64 P 219 H 73 H 45  
1 m³ 1,30



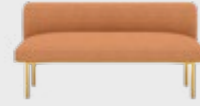
LAP 90-D  
H 64 P 73 H 73 H 45  
1 m³ 0,50



LAP 90-E  
H 64 P 146 H 73 H 45  
1 m³ 0,90



LAP 90-F  
H 64 P 146 H 73 H 45  
1 m³ 0,90



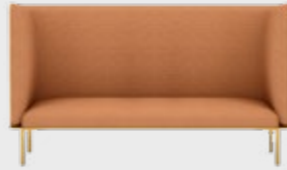
LAP 90-G  
H 64 P 146 H 73 H 45  
1 m³ 0,90



LAP 90-H  
H 109 P 80 H 73 H 45  
1 m³ 0,80



LAP 90-J  
H 109 P 146 H 73 H 45  
1 m³ 1,40



LAP 90-K  
H 109 P 219 H 73 H 45  
1 m³ 2,10



LAP 90-L  
H 109 P 73 H 73 H 45  
1 m³ 0,80



LAP 90-M  
H 109 P 146 H 73 H 45  
1 m³ 1,40



LAP 90-N  
H 109 P 146 H 73 H 45  
1 m³ 1,40



LAP 90-P  
H 109 P 146 H 73 H 45  
1 m³ 1,40



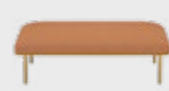
LAP 90-Q  
P 45 P 73 P 73  
1 m³ 0,32



LAP 90-R  
P 45 P 73 P 73  
1 m³ 0,32



LAP 90-T  
P 30 P 73 P 73  
1 m³ 0,25

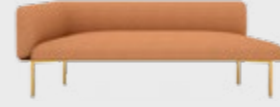


LAP 90-V  
P 45 P 146 P 73  
1 m³ 0,64

# Collection



LAP 105-A  
H 64 P 114 H 73 H 45  
1 m³ 0,68



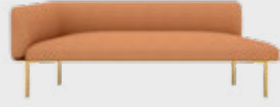
LAP 105-B  
H 64 P 190 H 73 H 45  
1 m³ 1,10



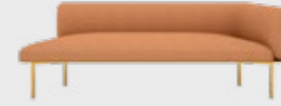
LAP 105-C  
H 64 P 114 H 73 H 45  
1 m³ 0,68



LAP 105-D  
H 64 P 114 H 73 H 45  
1 m³ 0,68



LAP 105-E  
H 64 P 190 H 73 H 45  
1 m³ 1,10



LAP 105-F  
H 64 P 190 H 73 H 45  
1 m³ 1,10



LAP 105-G  
H 109 P 114 H 73 H 45  
1 m³ 1,10



LAP 105-H  
H 109 P 190 H 73 H 45  
1 m³ 1,80



LAP 105-J  
H 109 P 114 H 73 H 45  
1 m³ 1,10



LAP 105-K  
H 109 P 114 H 73 H 45  
1 m³ 1,10



LAP 105-L  
H 109 P 190 H 73 H 45  
1 m³ 1,80



LAP 105-M  
H 109 P 190 H 73 H 45  
1 m³ 1,80



LAP 105-N  
P 45 P 80 P 73  
1 m³ 0,37



LAP 105-P  
P 45 P 95 P 73  
1 m³ 0,40



LAP 105-Q  
P 45 P 95 P 73  
1 m³ 0,40



LAP 105-R  
P 45 P 114 P 73  
1 m³ 0,48



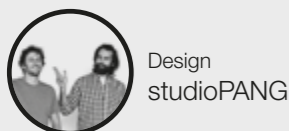
LAP 105-S  
P 45 P 114 P 73  
1 m³ 0,48



LAP 105-T  
P 30 P 95 P 73  
1 m³ 0,26



LAP 105-U  
P 30 P 114 P 73  
1 m³ 0,32



Fabio Damiani and Marco Quistini set up studioPANG in October 2012, based on the shared idea that by combining diverse passions and skill sets, the approach to the project is enriched with new ideas and perspectives.

StudioPANG is a workshop – one that is constantly engaged on researching and developing ideas and projects; an open, dynamic environment that leverages a wealth of different experiences to give rise to a versatile and multi-faceted business.

At its sole discretion, the company reserves the right to change dimensions and type of construction, and to make improvements and other changes to its products. The printing process does not give a perfect

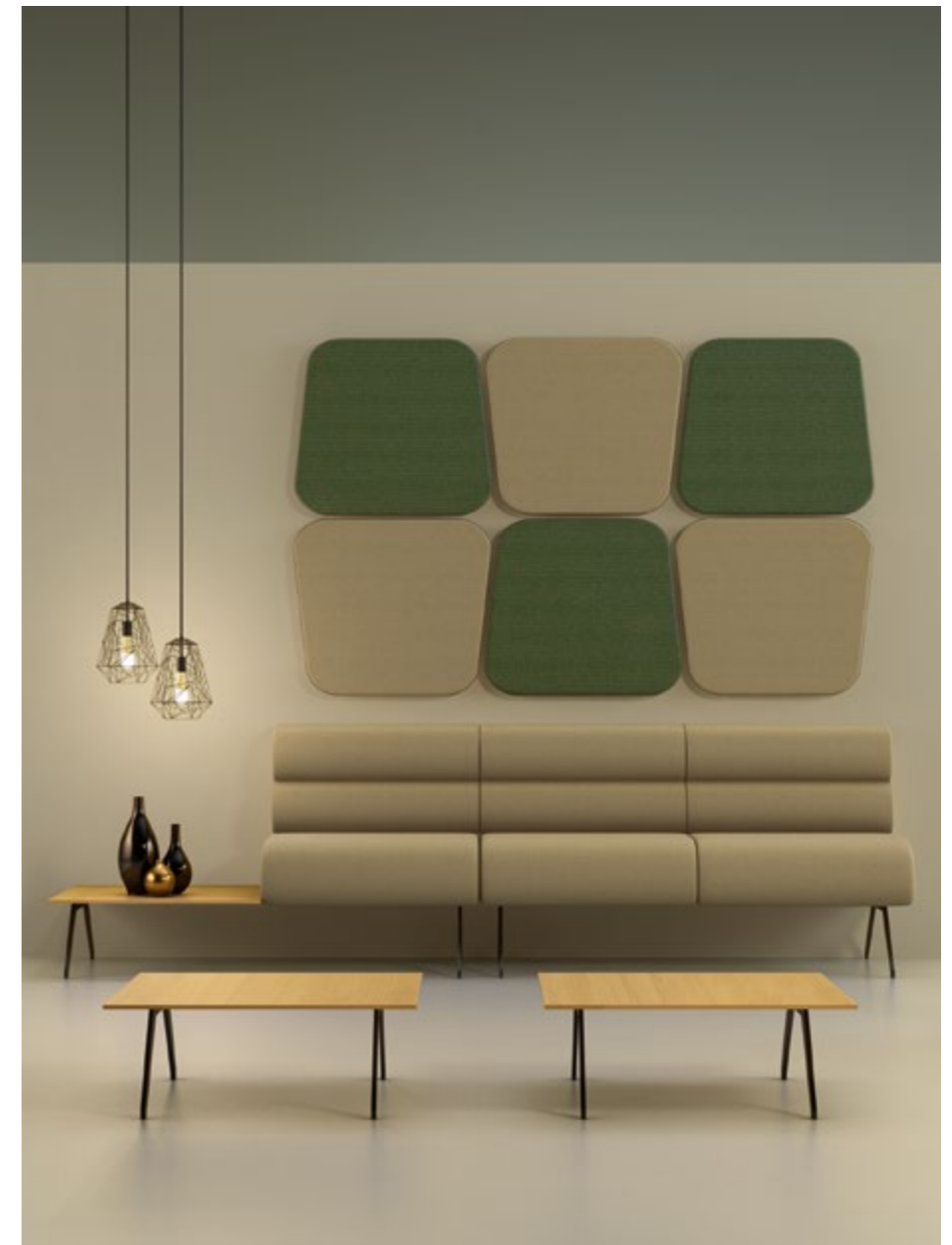
reproduction of the colours. For more accuracy, it is advisable to refer to the samples of materials available on request. All reproduction rights of all or part of the designs and illustrations are reserved worldwide.



# Ren

## Harmony and purity

design CarlesiTonelli



The Ren family is an innovative way of understanding contract chair systems. Its modularity allows unlimited composition possibilities, while always maintaining a strong personality thanks to the particular volume variety of the backrests.

Two wide sides can be used to define a space in which to sit comfortably and work, read cosily or relax leisurely. This collection takes its name from these comfort features: Ren, the Japanese word for lotus, a symbol of harmony and purity.

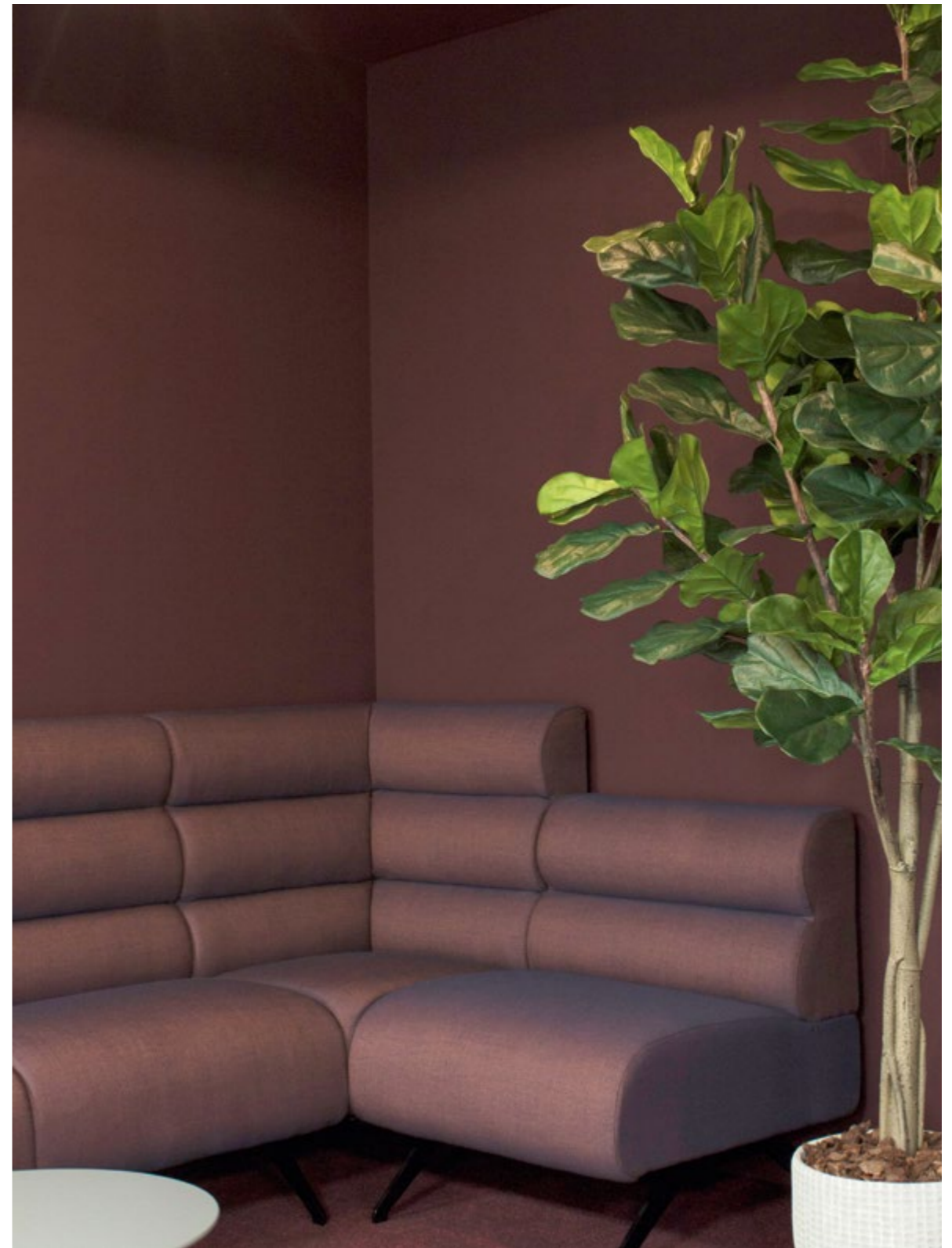












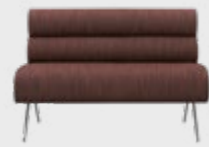
Project: Stroili Oro, Assago  
Milanofiori, Italy.  
Interior Design: Visual Display.  
Photography: Visual Display.

# Collection



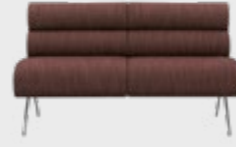
REN DINE 1 SEATER  
LOW BACKREST

H 84/90 P 77 H 75 H 42/48  
1 m³ 0,65



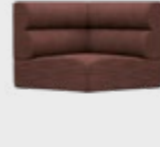
REN 130  
LOW BACKREST

H 84/90 P 132 H 75 H 42/48  
1 m³ 1,05



REN DINE 2 SEATER  
LOW BACKREST

H 84/90 P 154 H 75 H 42/48  
1 m³ 1,05



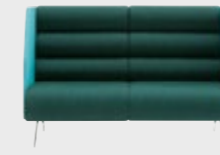
REN DINE CORNER  
LOW BACKREST

H 84/90 P 77 H 75 H 42/48  
1 m³ 0,55



REN OFFICE  
1 SEATER MEDIUM

H 104/110 P 117 H 75 H 42/48  
1 m³ 0,95



REN OFFICE  
2 SEATER MEDIUM

H 104/110 P 158 H 85 H 42/48  
1 m³ 1,95



REN DINE 1 SEATER  
MID BACKREST

H 104/110 P 77 H 75 H 42/48  
1 m³ 0,70



REN DINE 2 SEATER  
MID BACKREST

H 104/110 P 154 H 75 H 42/48  
1 m³ 1,35



REN DINE CORNER  
MID BACKREST

H 104/110 P 75 H 75 H 42/48  
1 m³ 0,70



REN OFFICE  
1 SEATER HIGH

H 124/130 P 117 H 75 H 42/48  
1 m³ 1,00



REN OFFICE  
2 SEATER HIGH

H 124/130 P 158 H 75 H 42/48  
1 m³ 2,05



REN DINE 1 SEATER  
HIGH BACKREST

H 124/130 P 77 H 75 H 42/48  
1 m³ 0,80



REN DINE 2 SEATER  
HIGH BACKREST

H 124/130 P 154 H 75 H 42/48  
1 m³ 1,55



REN DINE CORNER  
HIGH BACKREST

H 124/130 P 75 H 75 H 42/48  
1 m³ 0,80



REN WAIT 1 SEATER

□ 42/48 □ 77 □ 89  
1 m³ 0,38



REN WAIT 2 SEATER

□ 42/48 □ 154 □ 89  
1 m³ 0,70



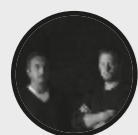
REN BENCH

□ 54/49 □ 150 □ 52  
1 m³ 0,60



REN TABLE

□ 31 □ 75 □ 75  
1 m³ 0,25



Design  
CarlesiTonelli

Combining different areas of expertise and careers in industrial design, they founded their studio in 2004. They link a passion for design to their knowledge of materials and technologies, and producers' demands to the market trends. They accept the challenge to find

new meanings in simple things, adding harmonious and friendly shapes to both private and public scenarios. Design, art direction and communications are the fields where they perform and interact with customers, in a relationship sharing values and goals.

At its sole discretion, the company reserves the right to change dimensions and type of construction, and to make improvements and other changes to its products. The printing process does not give a perfect

reproduction of the colours. For more accuracy, it is advisable to refer to the samples of materials available on request. All reproduction rights of all or part of the designs and illustrations are reserved worldwide.



## Med



### Geometric combinations

design CarlesiTonelli

Mix and combine the different items of Med collection to create spectacular seating compositions. Med is the ideal solution for lounges, office spaces, communal areas and waiting rooms.

Med elements consist of a range of benches with or without back panel. The panelled version offers a good soundproof capacity and private space.





# Collection



MED 01  
□ 42 □ 180 □ 70  
📦 1 m³ 0,70



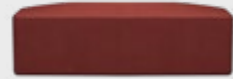
MED 02  
□ 42 □ 180 □ 70  
📦 1 m³ 0,70



MED 03  
H 98 □ 184 □ 74 H 42  
📦 1 m³ 1,60



MED 04  
H 98 □ 184 □ 74 H 42  
📦 1 m³ 1,60



MED 05  
□ 42 □ 180 □ 70  
📦 1 m³ 0,70



MED 06  
H 98 □ 188 □ 74 H 42  
📦 1 m³ 1,60



Design  
studioPANG

Fabio Damiani and Marco Quistini set up studioPANG in October 2012, based on the shared idea that by combining diverse passions and skill sets, the approach to the project is enriched with new ideas and perspectives.

StudioPANG is a workshop – one that is constantly engaged on researching and developing ideas and projects; an open, dynamic environment that leverages a wealth of different experiences to give rise to a versatile and multi-faceted business.

At its sole discretion, the company reserves the right to change dimensions and type of construction, and to make improvements and other changes to its products. The printing process does not give a perfect

reproduction of the colours. For more accuracy, it is advisable to refer to the samples of materials available on request. All reproduction rights of all or part of the designs and illustrations are reserved worldwide.



## Portopiccolo



## Sociable living

A radial shape designed to create a comfortable seating arrangement for shared moments and social interaction. This modular project allows you to create different configurations, and organise large and small cosy spaces filled with cushions to arrange to taste.

Portopiccolo explores communal areas through the use of geometric shapes and colours, in order to attain unusual and engaging combinations.





# Collection



PORTOPICCOLO 1  
H 98 P 180 H 80 H 42  
1 m³ 1,80



PORTOPICCOLO 2  
H 98 P 180 H 80 H 42  
1 m³ 1,80



PORTOPICCOLO 3  
H 98 P 180 H 80 H 42  
1 m³ 1,80



PORTOPICCOLO 4  
H 98 P 180 H 80 H 42  
1 m³ 1,80



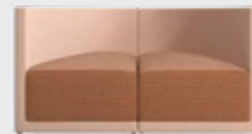
PORTOPICCOLO 1+2 COMP



PORTOPICCOLO 1+2 COMP



PORTOPICCOLO 3+4 COMP



PORTOPICCOLO 3+4 COMP

At its sole discretion, the company reserves the right to change dimensions and type of construction, and to make improvements and other changes to its products. The printing process does not give a perfect

reproduction of the colours. For more accuracy, it is advisable to refer to the samples of materials available on request. All reproduction rights of all or part of the designs and illustrations are reserved worldwide.



## America



### Clean-cut elegance

design R&D Torre

This modular system of sofas and poufs features clean-cut lines and substantial shapes. It enables the creation of linear and corner compositions, both monochrome and multicoloured.

They are available in a range of different dimensions, including larger sizes, all the while retaining an attractive minimal look.







# Collection



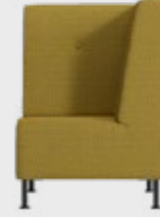
AMERICA 1 SEATER HIGH  
H 107 P 80 H 75 H 46  
1 m³ 0,75



AMERICA 2 SEATER HIGH  
H 107 P 120 H 75 H 46  
1 m³ 1,10



AMERICA 3 SEATER HIGH  
H 107 P 180 H 75 H 46  
1 m³ 1,65



AMERICA CORNER HIGH  
H 107 P 75 H 75 H 46  
1 m³ 0,70



AMERICA 1 SEATER LOW  
H 85 P 80 H 75 H 46  
1 m³ 0,58



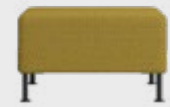
AMERICA 2 SEATER LOW  
H 85 P 120 H 75 H 46  
1 m³ 0,85



AMERICA 3 SEATER LOW  
H 85 P 180 H 75 H 46  
1 m³ 1,26



AMERICA CORNER LOW  
H 85 P 75 H 75 H 46  
1 m³ 0,44



AMERICA OTTOMAN  
P 46 P 75 P 75  
1 m³ 0,23

In-depth knowledge of the materials and the production processes, paired with 60 years' experience in the furniture industry, has enabled our team of designers and engineers to transform market needs into functional, comfortable and aesthetically appealing products as part of our company offerings. The advantage of relying on internal resources to conceive and develop a project is oftentimes conducive to the achievement of quick results. This significantly reduces time-to-market, while acting as a strategic support for made-to-order products.

At its sole discretion, the company reserves the right to change dimensions and type of construction, and to make improvements and other changes to its products. The printing process does not give a perfect

reproduction of the colours. For more accuracy, it is advisable to refer to the samples of materials available on request. All reproduction rights of all or part of the designs and illustrations are reserved worldwide.



## Jewel



## Precious sensations

design R&D Torre

At first glance, Jewel looks extremely minimal. However, its clean-cut geometric design is offset by generously sized padded cushions and a skilfully crafted shape to provide the ideal seating position and the highest level of comfort.

Available in a variety of finishes, the metal frame features minimal lines that emphasise the distinctive character of the project and its suitability for the most diverse environments. Jewel comes in the armchair and sofa version, in a variety of textures and colours, including two-tone combinations to enhance the contrast between the base and the seat and backrest cushions.

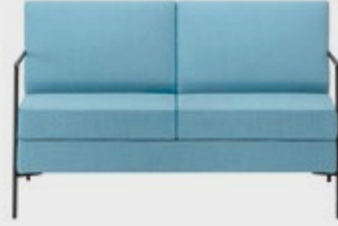


# Collection



JEWEL 05

H 78 H 66 H 85 H 42 H 59  
1 m³ 0,41



JEWEL 09

H 78 H 125 H 85 H 42 H 59  
1 m³ 1,00



## Lina

### Imposing and impressive

design R&D Torre



Lina is a highly comfortable armchair endowed with a strong personality. Its generously sized seat contrasts with an embracing backrest.

Either alone or arranged in multiple compositions, Lina embraces the body and relaxes the mind, while also defining ambient interiors. Its thin and minimal metal frame adds to the overall armchair design, and makes it a truly elegant centrepiece.



# Collection



LINA 05

H 75 H 65 H 70 H 43

1 m<sup>3</sup> 0,52

---

In-depth knowledge of the materials and the production processes, paired with 60 years' experience in the furniture industry, has enabled our team of designers and engineers to transform market needs into functional, comfortable and aesthetically appealing products as part of our company offerings. The advantage of relying on internal resources to conceive and develop a project is oftentimes conducive to the achievement of quick results. This significantly reduces time-to-market, while acting as a strategic support for made-to-order products.

At its sole discretion, the company reserves the right to change dimensions and type of construction, and to make improvements and other changes to its products. The printing process does not give a perfect

reproduction of the colours. For more accuracy, it is advisable to refer to the samples of materials available on request. All reproduction rights of all or part of the designs and illustrations are reserved worldwide.



## Arty

### Dynamic partitions

design CarlesiTonelli



Arty is a system of sound-absorbing partitions, designed to divide and organise space to create private oases, in line with a concept of comfortable, dynamic and ever-changing surroundings.

Their gently rounded and organic shape enables endless creative, ever-changing and visually appealing compositions.



# Collection



ARTY 01      ARTY 02  
□ 185 □ 126 □ 24  
📦 1 m³ 0,80



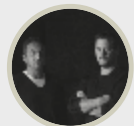
ARTY 03      ARTY 04  
□ 132 □ 126 □ 24  
📦 1 m³ 0,60



ARTY  
CEILING&WALL 1  
□ 56 □ 50  
📦 5 m³ 0,18



ARTY  
CEILING&WALL 2  
□ 46 □ 50  
📦 5 m³ 0,18



Design  
CarlesiTonelli

Combining different areas of expertise and careers in industrial design, they founded their studio in 2004. They link a passion for design to their knowledge of materials and technologies, and producers' demands to the market trends. They accept the challenge to find

new meanings in simple things, adding harmonious and friendly shapes to both private and public scenarios. Design, art direction and communications are the fields where they perform and interact with customers, in a relationship sharing values and goals.

At its sole discretion, the company reserves the right to change dimensions and type of construction, and to make improvements and other changes to its products. The printing process does not give a perfect

reproduction of the colours. For more accuracy, it is advisable to refer to the samples of materials available on request. All reproduction rights of all or part of the designs and illustrations are reserved worldwide.



## Mou

Softness,  
functionality  
and comfort

design studioPANG



Mou means softness, functionality and comfort. The collection is defined by a graphic silhouette, generous volumes and a wide range of colours and dimensions which allow the user to obtain any possible configuration. A family of ottomans, at once attractive and iconic: Mou gives a casual touch of comfort in both contract, private or communal areas, and residential environments.

Mou is available in different customisable sizes, always in a round shape. Moreover, a side table can be added to any pouf, directly fixed to its structure.







# Collection



MOU 1 H6  
□ 50 Ø 50  
📦 1 m³ 0,18



MOU 1 H18  
□ 50 Ø 50  
📦 1 m³ 0,18



MOU 2 H6  
□ 45 Ø 75  
📦 1 m³ 0,32



MOU 2 H12  
□ 45 Ø 75  
📦 1 m³ 0,32



MOU 3 H6  
□ 40 Ø 100  
📦 1 m³ 0,50



MOU 3 H12  
□ 40 Ø 100  
📦 1 m³ 0,50



MOU 4 H6  
□ 40 Ø 125  
📦 1 m³ 0,80



MOU 4 H12  
□ 40 Ø 125  
📦 1 m³ 0,80



MOU SIDE TABLE



Design  
studioPANG

Fabio Damiani and Marco Quistini set up studioPANG in October 2012, based on the shared idea that by combining diverse passions and skill sets, the approach to the project is enriched with new ideas and perspectives.

StudioPANG is a workshop – one that is constantly engaged on researching and developing ideas and projects; an open, dynamic environment that leverages a wealth of different experiences to give rise to a versatile and multi-faceted business.

At its sole discretion, the company reserves the right to change dimensions and type of construction, and to make improvements and other changes to its products. The printing process does not give a perfect

reproduction of the colours. For more accuracy, it is advisable to refer to the samples of materials available on request. All reproduction rights of all or part of the designs and illustrations are reserved worldwide.



# Molecule



## Endless combinations

design R&D Torre

A design formula based on just a few and simple padded components that come together to create the most diverse solutions: this is Molecule. An extremely versatile system designed to suit and furnish any type of interior and space size.

From large public spaces to home interiors, the sky's the limit. The same elements can be disassembled and reassembled just as easily, in line with a concept of flowing and dynamic interior décor. Their soft and minimal shapes can be upholstered with a wide selection of coverings to match any style and interior design project.







## Collection



MOLECULE 3 - 1 SEATER  
 □ 51 □ 60 □ 77  
 📦 1 m³ 0,36



MOLECULE 3 - 2 SEATER  
 □ 51 □ 120 □ 77  
 📦 1 m³ 0,70



MOLECULE 3 - 3 SEATER  
 □ 51 □ 180 □ 77  
 📦 1 m³ 0,96



MOLECULE 4 - 1 SEATER  
 □ 51 □ 60 □ 77  
 📦 1 m³ 0,30



MOLECULE 4 - 2 SEATER  
 □ 51 □ 120 □ 77  
 📦 1 m³ 0,53



MOLECULE 4 - 3 SEATER  
 □ 51 □ 180 □ 77  
 📦 1 m³ 0,93

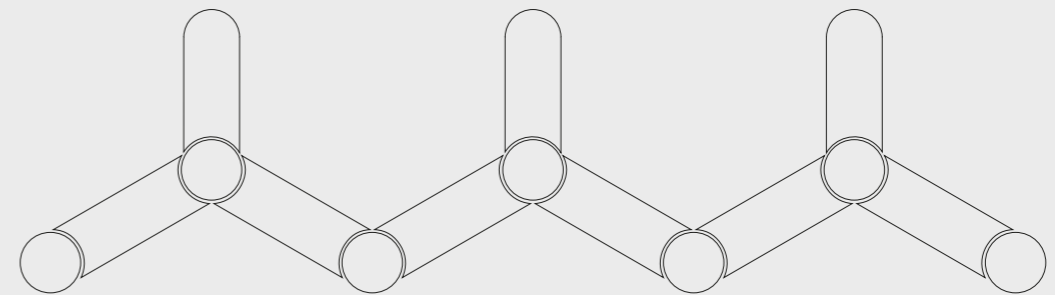
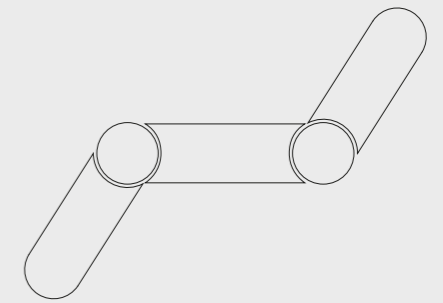
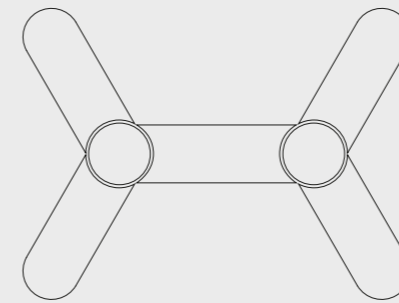
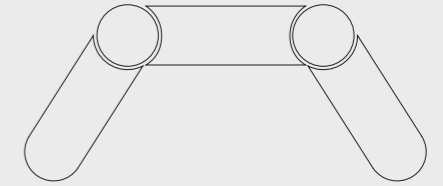
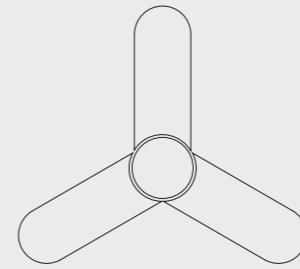


MOLECULE 5  
 □ 55 Ø 66  
 📦 1 m³ 0,34



MOLECULE 6  
 □ 47 □ 144 □ 74  
 📦 1 m³ 0,60

## Compositions





# Bloom

## Versatile compositions

design R&D Torre



Soft and colourful elements are combined into versatile compositions like a jigsaw puzzle. Bloom is a system that uses three graphic shapes to create informal interior décor settings that are both flexible and original. Floral designs, patterns and prints: Bloom fills the space with amazing and cosy shapes, visions and inspirations.

Inspired by planning and interior design freedom, shapes and colours intermingle to accommodate ever-changing needs and circumstances, anytime and anywhere. Versatile and charming, Bloom is a great idea for customising any interior through a profusion of different solutions.

**ON THE RIGHT.** Project: STRAHotel&bar, Milan, Italy. Photography: Max Zambelli.





## Collection



BLOOM 1  
 □ 42,5 Ø 42,5  
 📦 1 m³ 0,10

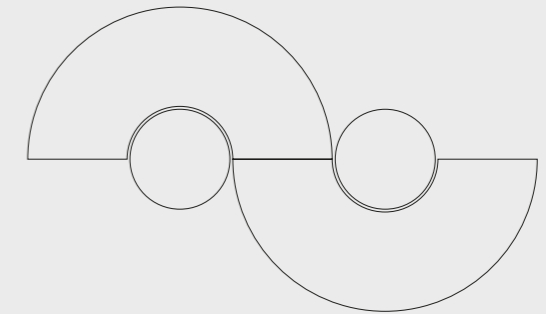
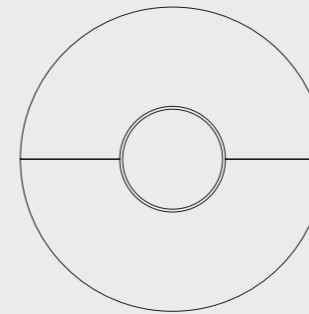
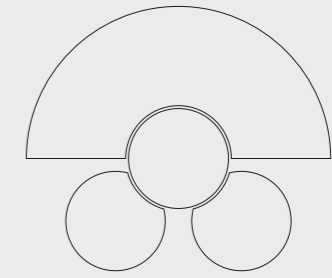
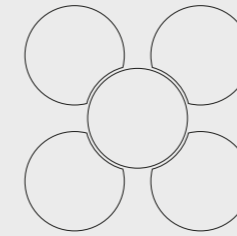
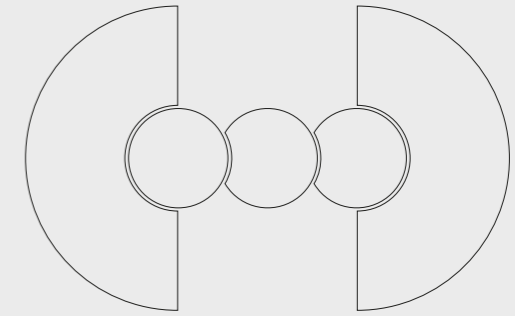
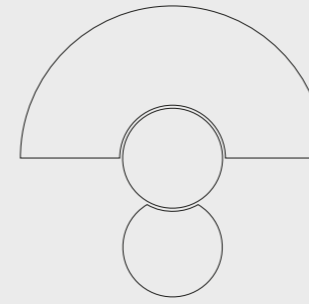


BLOOM 2  
 □ 42,5 Ø 42,5  
 📦 1 m³ 0,10



BLOOM 3  
 □ 42,5 □ 121 □ 62,5  
 📦 1 m³ 0,36

## Compositions





One



## Simply unique

design R&D Torre

One is a comfortable and handy pouf designed to complement any interior.

It features rounded and minimal shapes and comes in a selection of upholstery options, including a two-tone version, to create beautiful combinations with other furnishings.

# Collection



ONE 1  
□ 50 ∅ 70  
📦 1 m³ 0,30



ONE 2  
□ 43 ∅ 120/160  
📦 1 m³ 0,85/1,45



ONE 3  
□ 43 □ 120/160 □ 60/80  
📦 1 m³ 0,50/0,75





# Penta



## Creative geometries

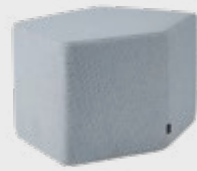
design CarlesiTonelli

The pentagon, a geometric shape studied by art and architectural theoreticians over the centuries, is the compositional principle of this system.

It consists of padded modules and coffee tables that can be assembled to create a multitude of arrangements of all sizes, using different colours and materials as well.



## Collection



PENTA

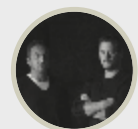
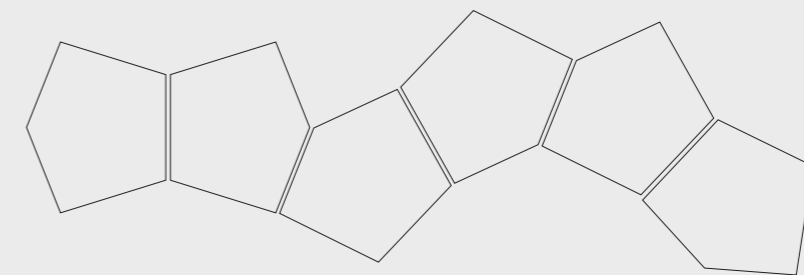
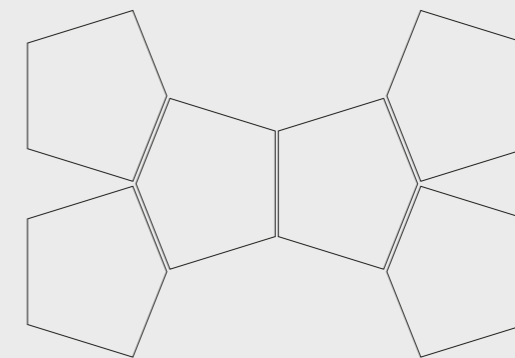
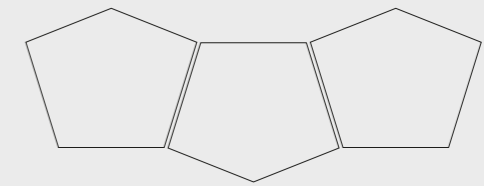
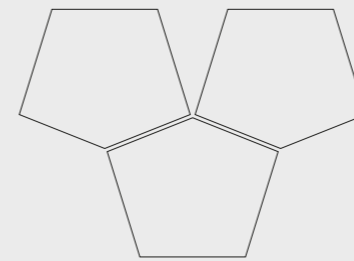
□ 42 □ 70 □ 50  
📦 1 m³ 0,20



PENTA T

□ 40 □ 72 □ 51  
📦 1 m³ 0,20

## Compositions



Design  
CarlesiTonelli

Combining different areas of expertise and careers in industrial design, they founded their studio in 2004. They link a passion for design to their knowledge of materials and technologies, and producers' demands to the market trends. They accept the challenge to find

new meanings in simple things, adding harmonious and friendly shapes to both private and public scenarios. Design, art direction and communications are the fields where they perform and interact with customers, in a relationship sharing values and goals.

At its sole discretion, the company reserves the right to change dimensions and type of construction, and to make improvements and other changes to its products. The printing process does not give a perfect

reproduction of the colours. For more accuracy, it is advisable to refer to the samples of materials available on request. All reproduction rights of all or part of the designs and illustrations are reserved worldwide.



## Pongo

### An essential accessory

design R&D Torre



Pongo is an elegant and handy table featuring a useful tabletop, designed to suit any kind of environment. Its clean-cut lines make it the ideal companion for any type of seat.

Available in three different heights and suitable for all sorts of uses and environments.

# Collection



PONGO BASE H40  
 □ 40 □ 45 □ 45  
 📦 1 m³ 0,11



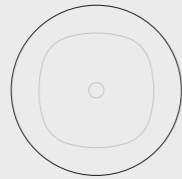
PONGO BASE H46  
 □ 46 □ 45 □ 45  
 📦 1 m³ 0,13



PONGO BASE H74  
 □ 74 □ 45 □ 45  
 📦 1 m³ 0,20



TOP Ø60  
 Thickness 18 mm  
 📦 1 m³ 0,02



TOP Ø70  
 Thickness 18 mm  
 📦 1 m³ 0,02



TOP Ø80  
 Thickness 18 mm  
 📦 1 m³ 0,02