

HOUSE COLLECTION  
**BEZUGSSTOFFE**  
GRUPPE 2

**PURE**

**500.000 SCHEUERTOUREN**

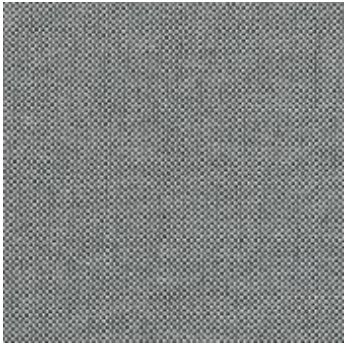


**STUHLKONTOR BERLIN®**

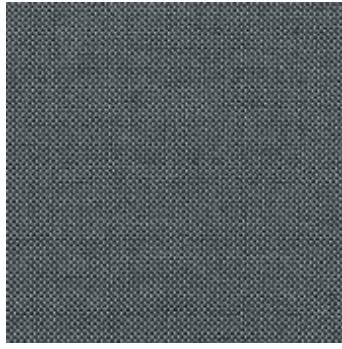
**PURE**

---

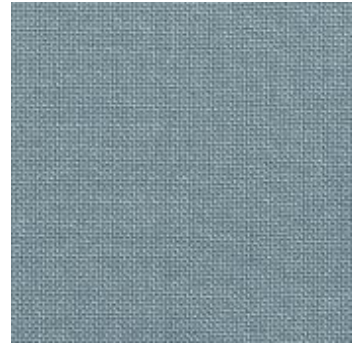
Spectrum Kollektion | Collection



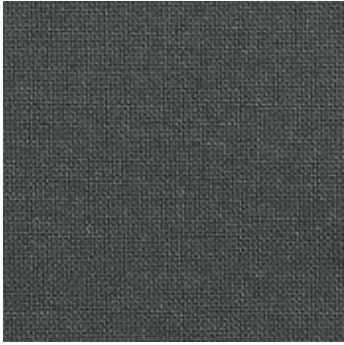
19



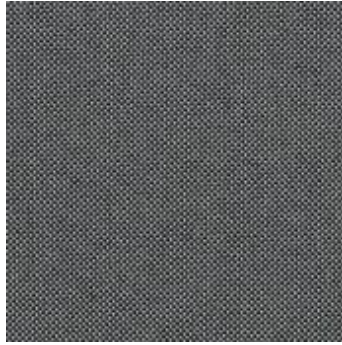
16



17



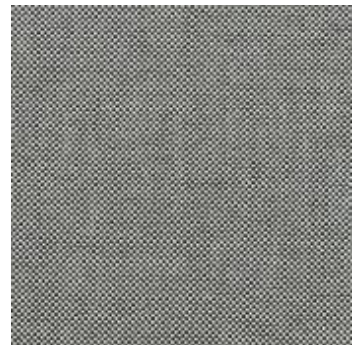
15



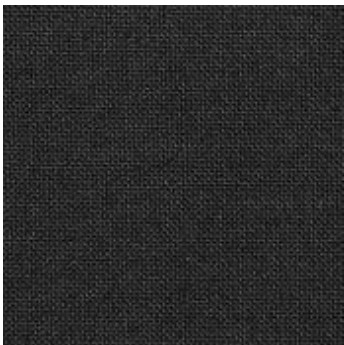
11



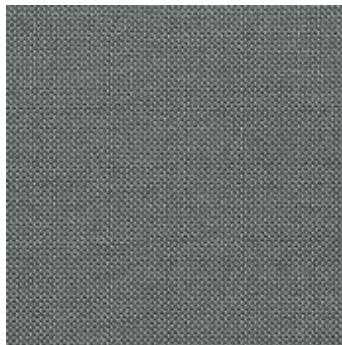
14



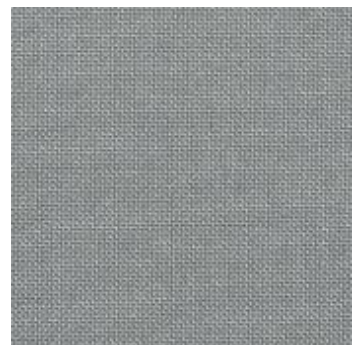
13



10

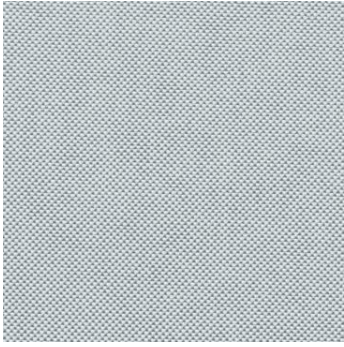


18

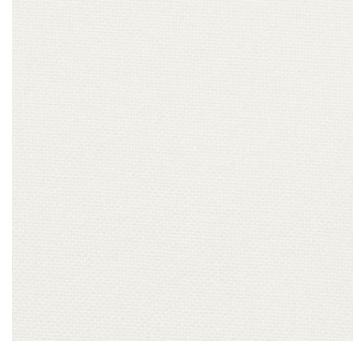


110

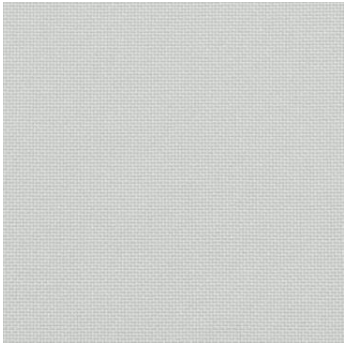




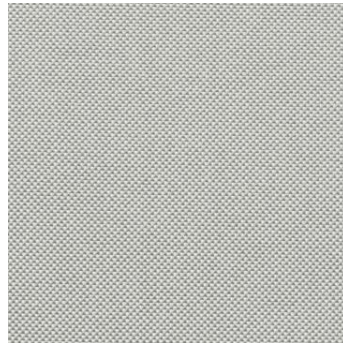
19



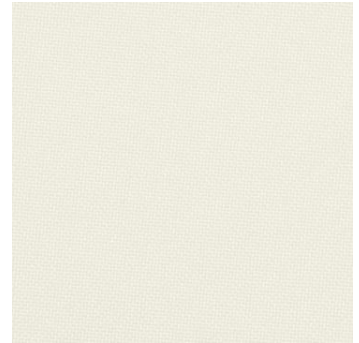
25



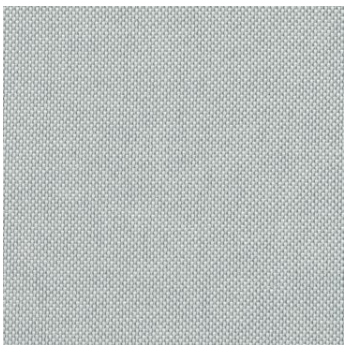
20



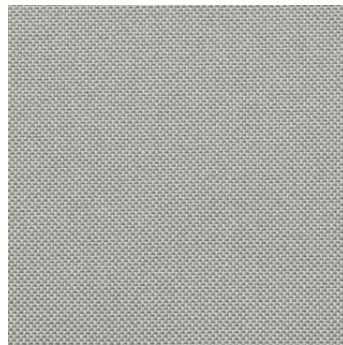
21



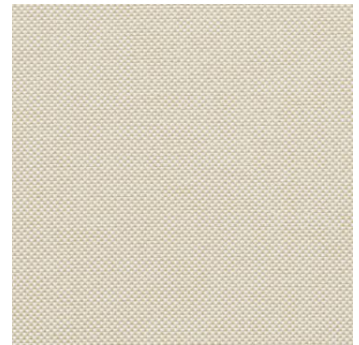
30



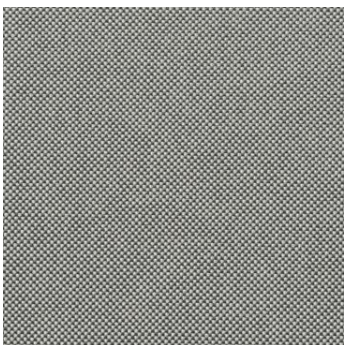
23



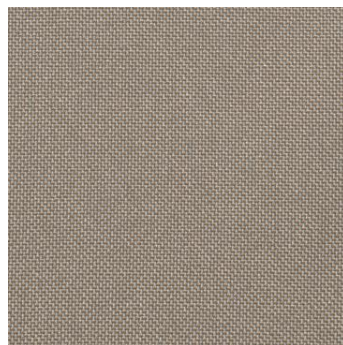
24



31

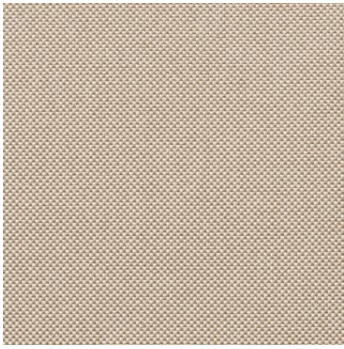


111



46

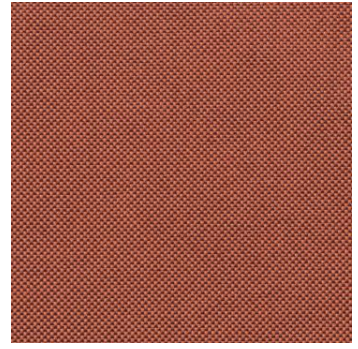




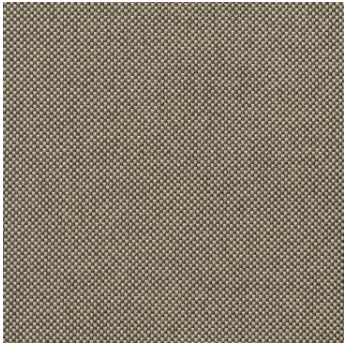
32



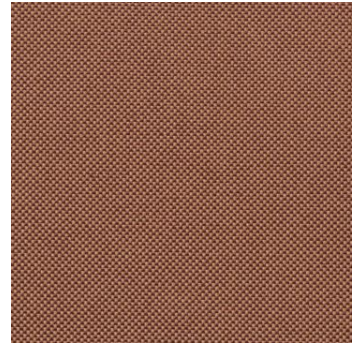
44



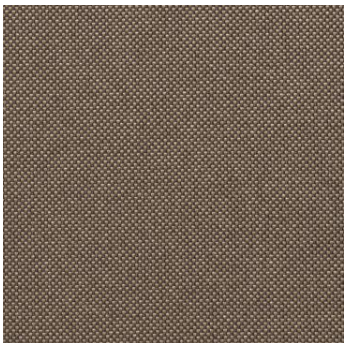
64



47



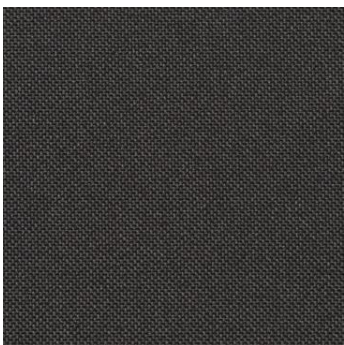
42



43



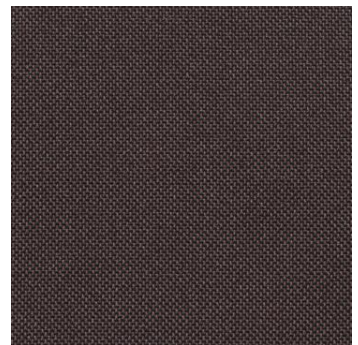
45



40

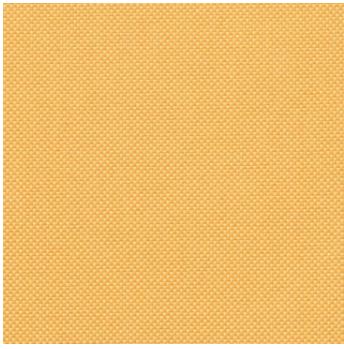


41

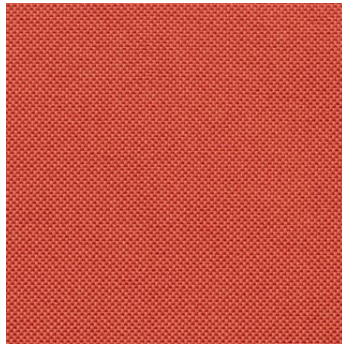


48

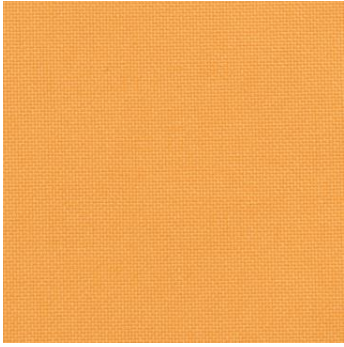




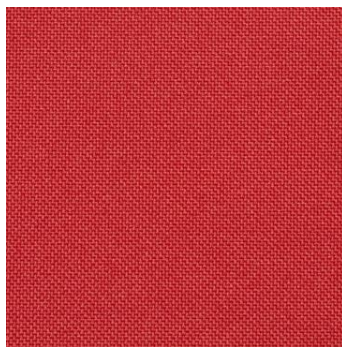
65



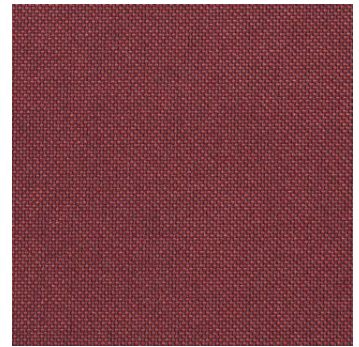
62



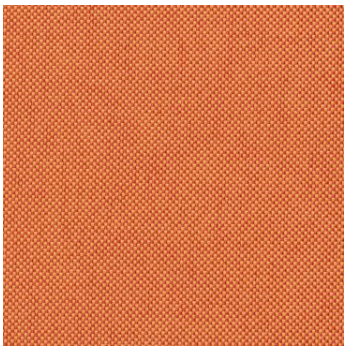
66



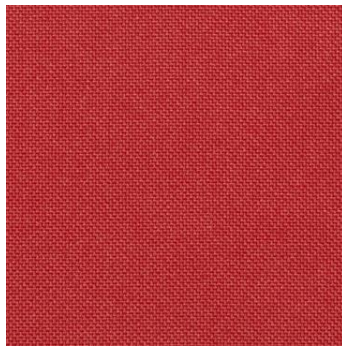
60



611



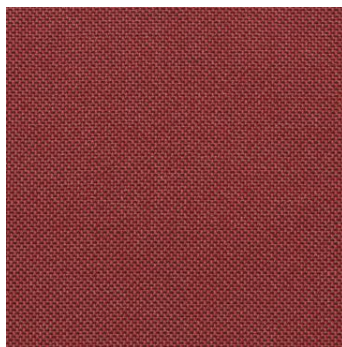
67



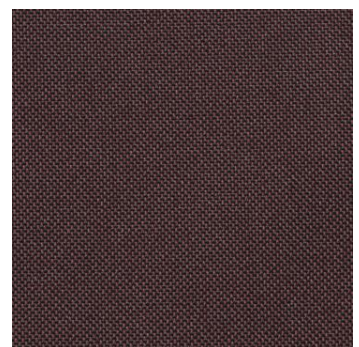
61



68

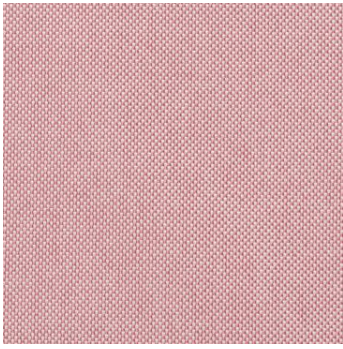


63

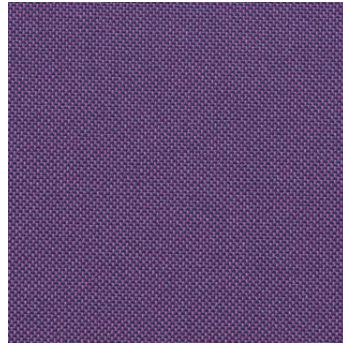


69





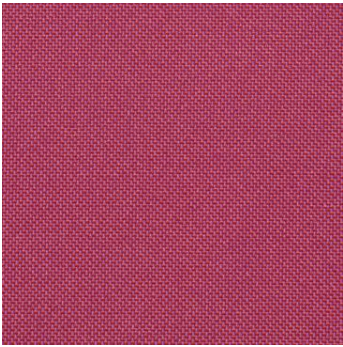
613



615



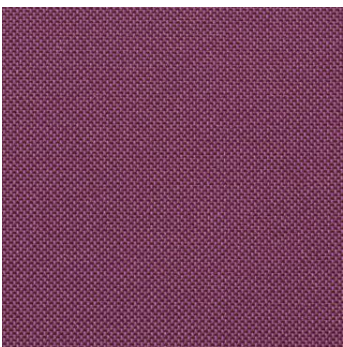
73



612



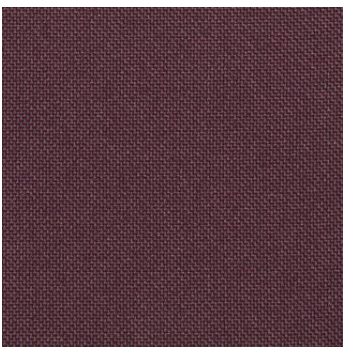
75



614



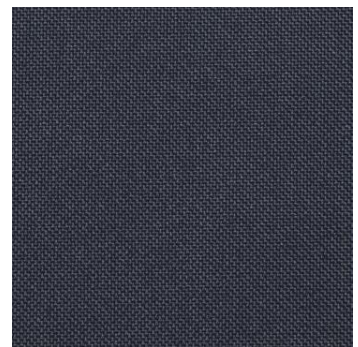
72



610

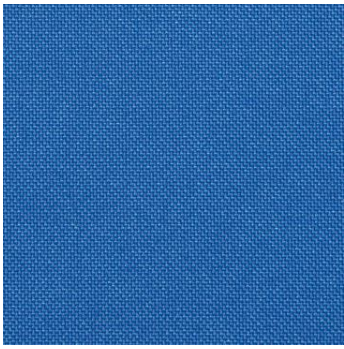


71

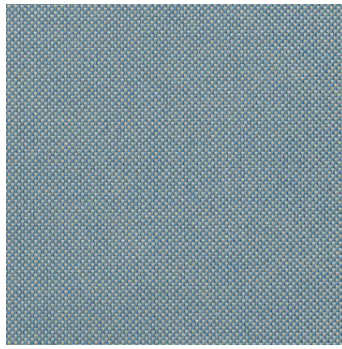


70

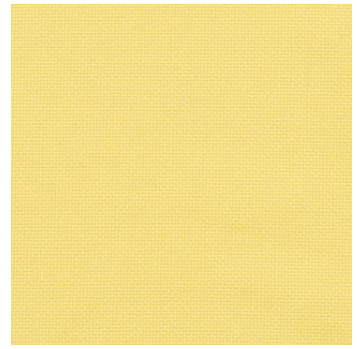




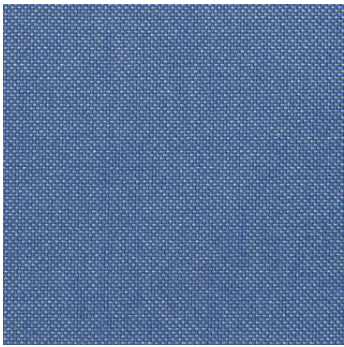
74



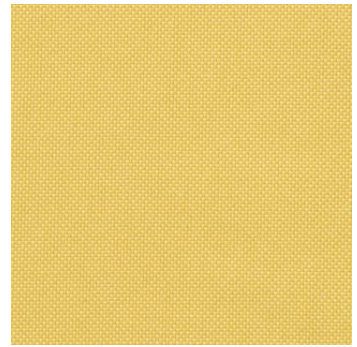
78



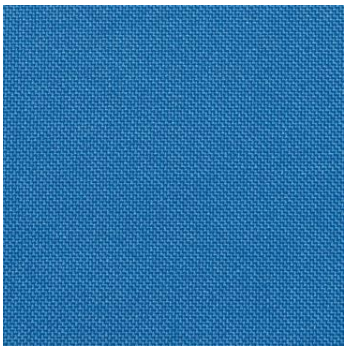
50



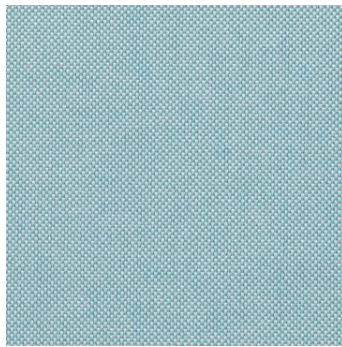
77



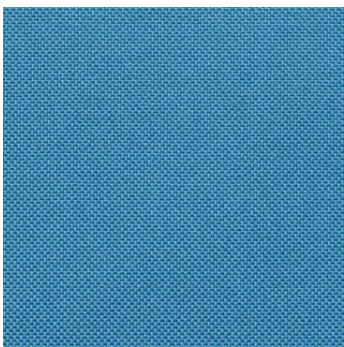
51



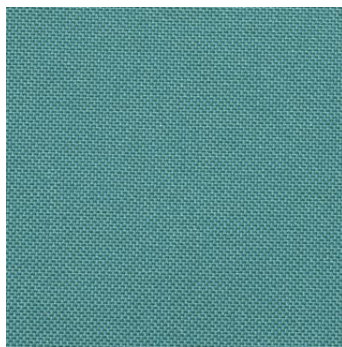
76



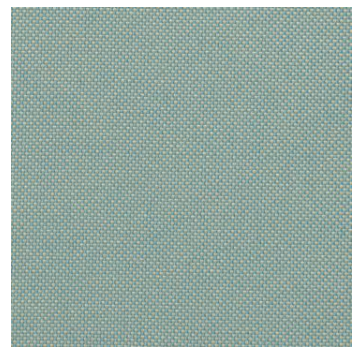
80



79

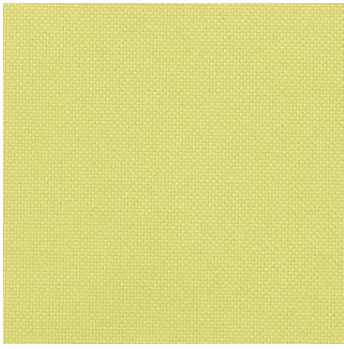


18

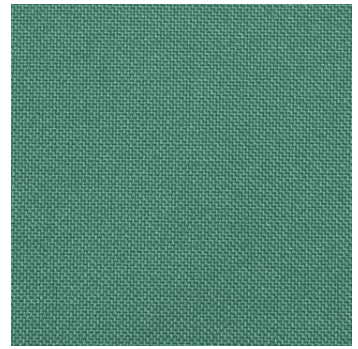


81





90



95



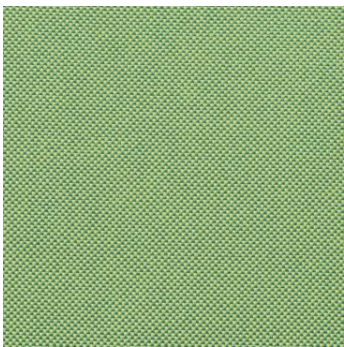
91



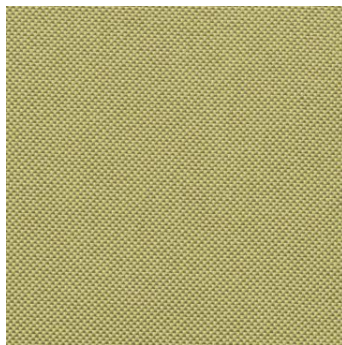
92



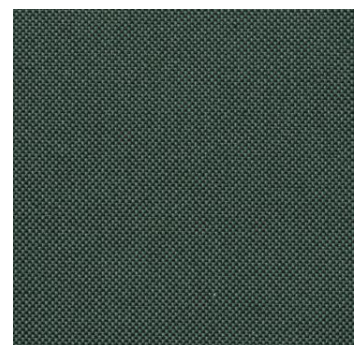
96



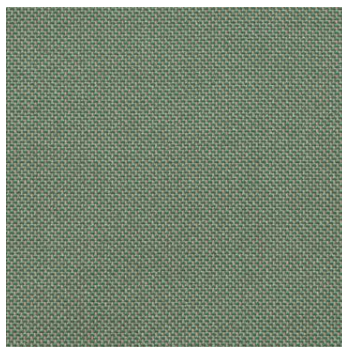
94



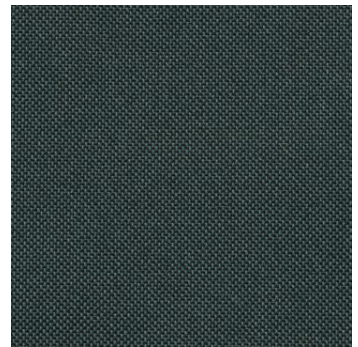
93



97



99



98

# PURE

## ZUSAMMENSETZUNG

100 % Polyamid

## BREITE

140 cm

## GEWICHT

ca. 305 g/lfdm

## OEKO-TEX STANDARD 100

## SCHEUERVERHALTEN

Martindale (Belastung 12 Kpa)

DIN EN ISO 12947-2: 2017

500.000 Touren

## GEEIGNET FÜR 24/7 EINSATZ

## BRANDVERHALTEN

D - DIN EN 1021: 2014 Teil 1 (Zigarettestest)  
in Kombination mit Schaumstoff B 3 normal  
brennbar mind. 23 kg/m<sup>3</sup> Raumgewicht  
DIN EN 1021: 2014 Teil 2  
35 kg/m<sup>3</sup>

(Butanflammentest) in Kombination mit  
schwerentflammbarem Schaumstoff CMHR  
mind. 35 kg/m<sup>3</sup> Raumgewicht  
Klassifizierung des Brandverhaltens des  
Polsterverbundes nach DIN 66084 P-b

## LICHTECHTHEIT

DIN EN ISO 105-B02: 2014

7

## REIBECHTHEIT

DIN EN ISO 105-X12: 2016

4 - 5 trocken und nass

## SCHWEISSECHTHEIT

DIN EN ISO 105-E04: 2013

4 - 5 sauer und alkalisch

## TROCKENREINIGUNGSECHTHEIT

DIN EN ISO 105-D01: 2010

4 - 5

## REINIGUNGSANLEITUNG

Festverspannte Bezüge: Absaugen,  
Trockenschäumreinigung  
Abnehmbare Bezüge: Chemische Reinigung

Für weitere Auskünfte stehen wir Ihnen  
gerne zur Verfügung

## COMPOSITION

100 % Polyamid

## WIDTH

140 cm

## WEIGHT

approx. 305 g/lm

## OEKO-TEX STANDARD 100

## ABRASION RESISTANCE

Martindale (load 12 Kpa)

DIN EN ISO 12947-2: 2017

500.000 cycles

## SUITABLE FOR 24/7 USE

## FLAMMABILITY

D - DIN EN 1021: 2014 part 1 (cigarette test)  
when tested with non flame retardant  
foam B 3 density 23 kg/m<sup>3</sup> minimum  
DIN EN 1021: 2014 part 2 (butane flame

test) when tested with flame retardant foam  
CMHR density 35 kg/m<sup>3</sup> minimum  
ignitability classification of the upholstery  
composite according to DIN 66084 P-b

## FASTNESS TO LIGHT

DIN EN ISO 105-B02: 2014

7

## FASTNESS TO RUBBING

DIN EN ISO 105-X12: 2016

4 - 5 dry and wet

## FASTNESS TO PERSPIRATION

DIN EN ISO 105-E04: 2013

4 - 5 acid and alkaline

## FASTNESS TO DRY CLEANING

DIN EN ISO 105-D01: 2010

4 - 5

## CLEANING

Fixed covers: vacuum cleaning,  
cleaning with dry foam  
Removable covers: dry cleaning

Please feel free to contact us for any  
further information

